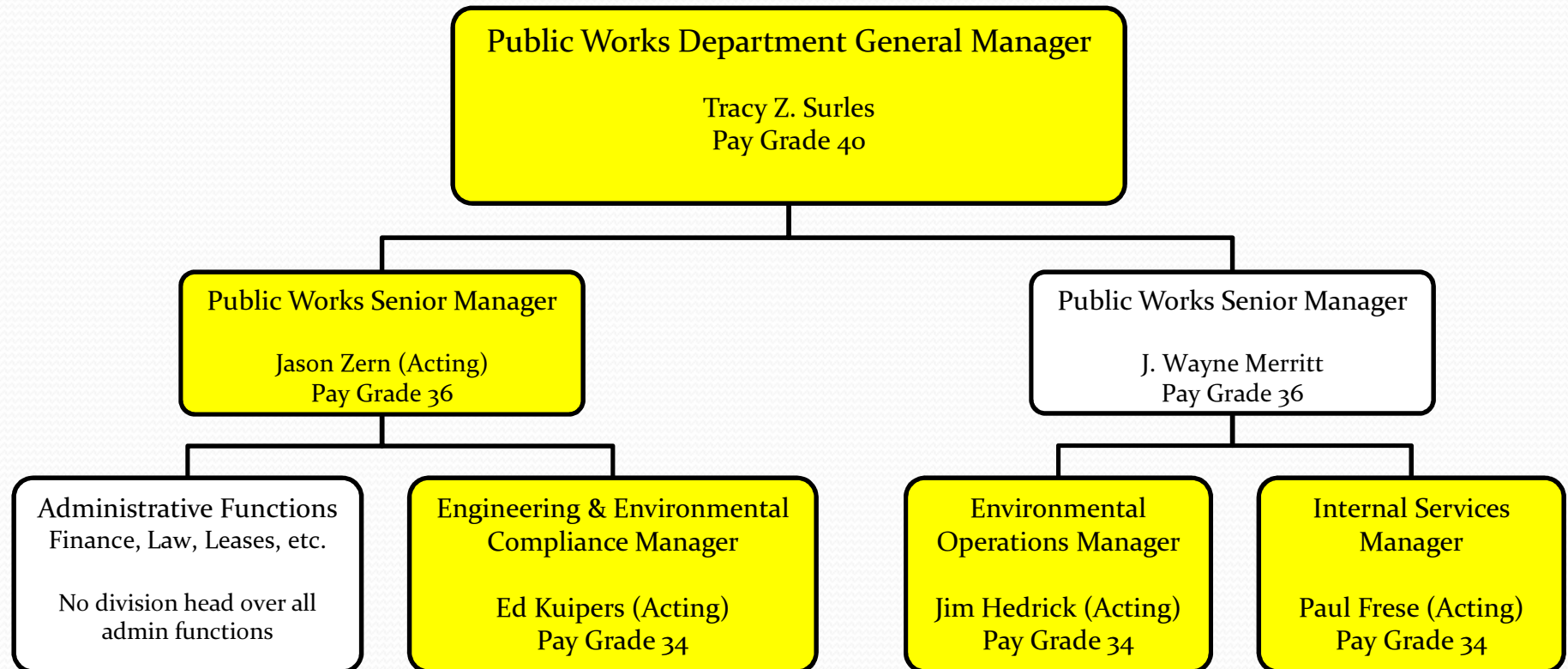


NEW CASTLE COUNTY DEPARTMENT OF PUBLIC WORKS

New Job Specifications/Reorganization



Department of Public Works



Vacant Position



Sewer Maintenance Manager

- New position, approved by the HRAB, introduced to Council April 24, vote on May 8
- Will oversee the Sewer Operations Division
- Better description of job duties with a focus on maintenance practices, management and personnel skills



Stormwater and Environmental Programs Manager

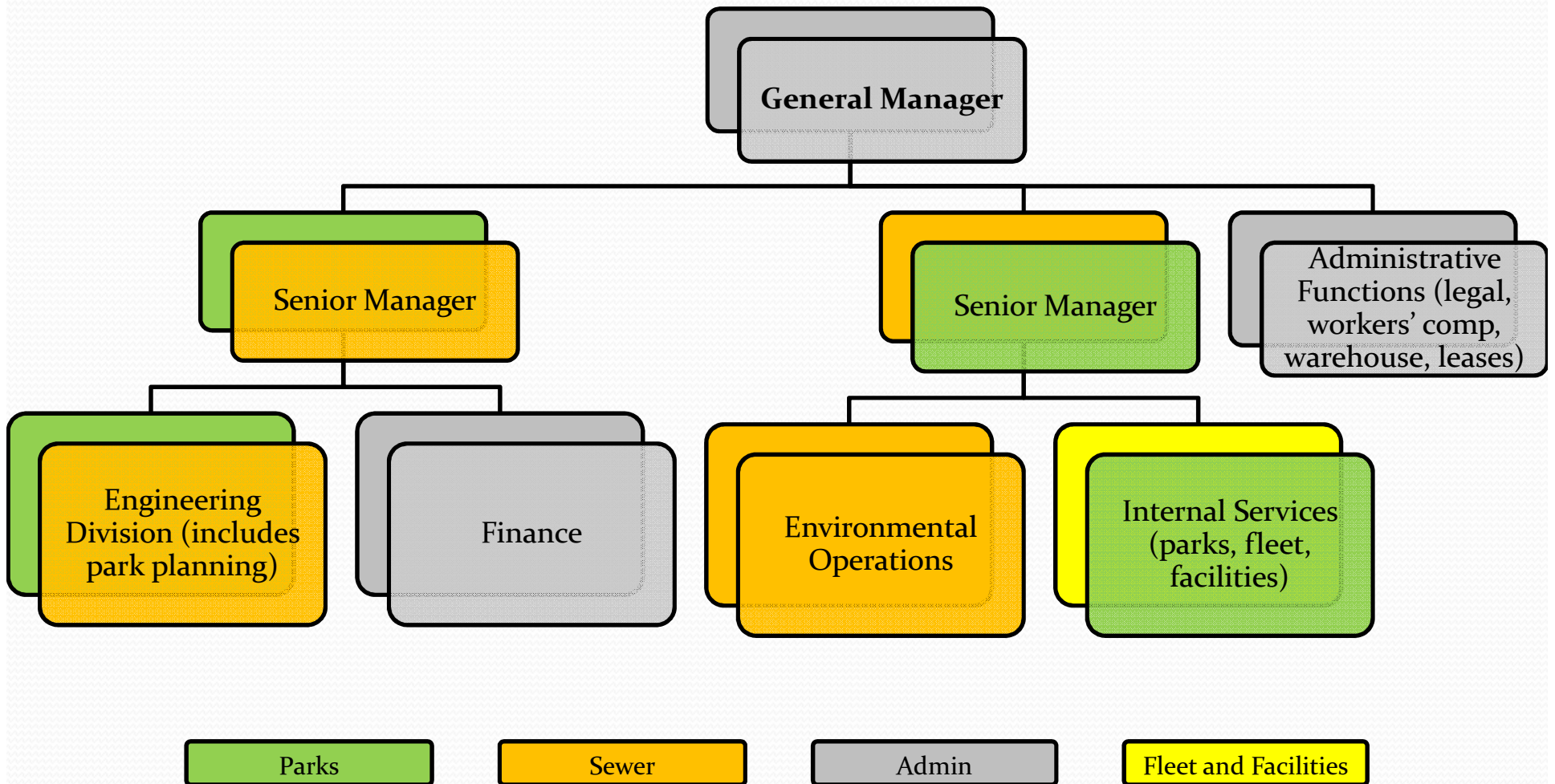
- Formerly the Environmental Compliance Manager, approved by HRAB, introduced April 24, vote on May 8
- Job spec revised and position upgraded as a result of review by Human Resources
 - Upgraded specification includes the NPDES MS₄ stormwater program and the FOG program in addition to traditional duties such as the Industrial Pretreatment Program, the lab and landfill sites
- Position will manage a division that handles stormwater and other environmental issues rather than having them be subset of the Sewer Engineering Division (different functions)



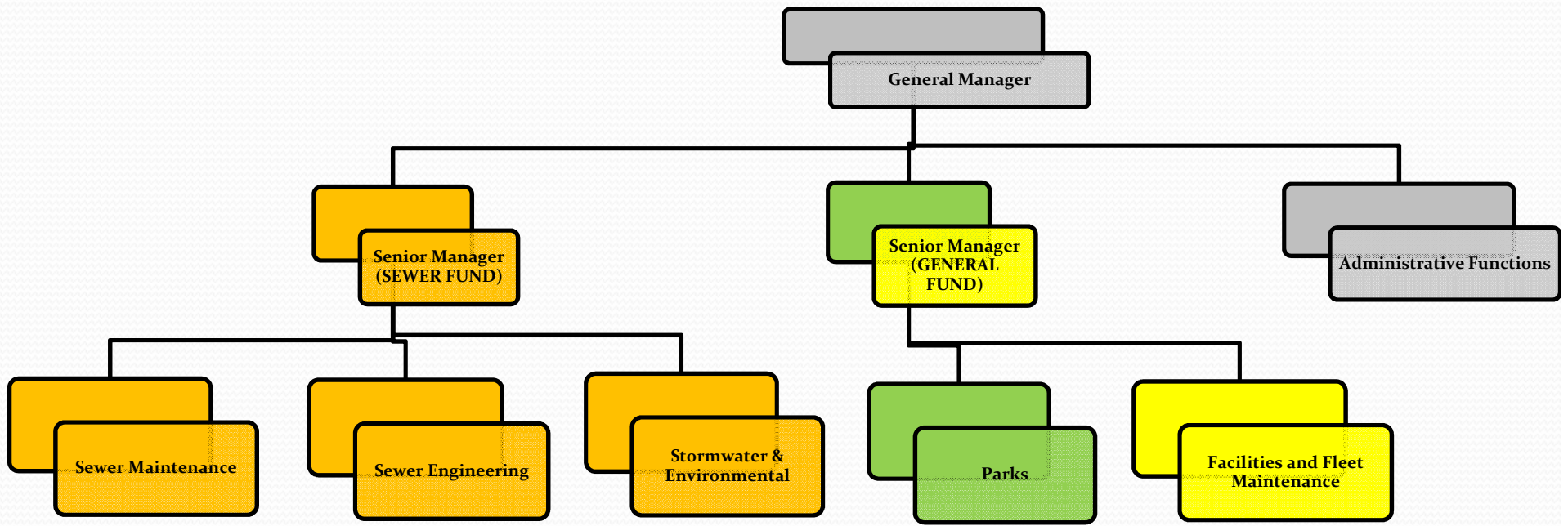
Parks Division Manager

- New position, HRAB approved, will be introduced to Council on May 8
- Responsible for park planning, park maintenance and coordination with Community Services' recreation team
- Organizes all Public Works park functions under one manager in one division to improve communication and efficiencies

Department of Special Services



Department of Public Works



Sewer

Parks

Fleet and Facilities

Admin

Comparison

- **DEPARTMENT OF SPECIAL SERVICES**

- **Senior Manager (Currently Acting)**
 - **Engineering Division (includes sewer planning, park planning and stormwater/environmental)**
 - **Finance**
- **Senior Manager**
 - **Environmental Operations Division (sewer maintenance)**
 - **Internal Services Division (fleet, facilities and park maintenance)**
- **GM**
 - **Workers' Compensation/LII**
 - **Attorneys**
 - **Management and Productivity/Warehouse/Leases**

- **DEPARTMENT OF PUBLIC WORKS**

- **Senior Manager, currently advertised, sel. cert. for P.E., sewers and stormwater**
 - **Sewer Sub-Department (Sewer Engineering Division, Sewer Maintenance Division, Stormwater and Environmental Programs Division)**
- **Senior Manager**
 - **Parks Division (planning and maintenance)**
 - **Facilities and Fleet Division**
- **GM**
 - **Administrative Division (Finance, Workers' Compensation/LII, payroll, attorneys, management and productivity)**