

LAND PRESERVATION INITIATIVE

NCC DEPARTMENT OF LAND USE



BACKGROUND

Chapter 6 of The 2012 Comprehensive Development Plan Update Tasks the County with:

- Preservation of Natural Resources
- Coordinating Public and Private Open Space Network Linkages
- Preservation of Agricultural Heritage as Well as the Creation of Agricultural Districts

PROGRAM

The program will focus on land preservation of two (2) specific uses:

- Agricultural Land
 - The County is Partnering with the Delaware Department of Agriculture to Participate in Delaware's Aglands Preservation Program
 - Key benefits making use of their existing program that includes outreach, appraisals, bids, discount process, established support structure, etc...
- Open Space
 - The Department of Land Use has Reached Out to the Department of Special Services to Coordinate the Land Preservation Program with the Park Program.

DELAWARE'S AGLANDS PRESERVATION PROGRAM

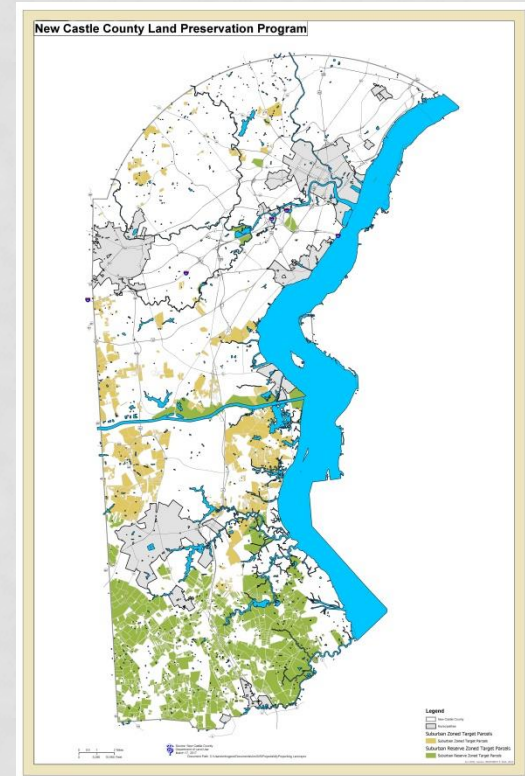
Delaware Agricultural Lands Preservation Foundation Selection Criteria

- Must be Enrolled in the Ten Year Program
- Additionally Considers Discount, Prime Soil, Cropland and Forest Acreage
- 2017 Received Five (5) Bids for New Castle County

NEW CASTLE COUNTY SELECTION CRITERIA

The Department of Land Use will Evaluate Each of the Five (5) Sites Utilizing a GIS Model.

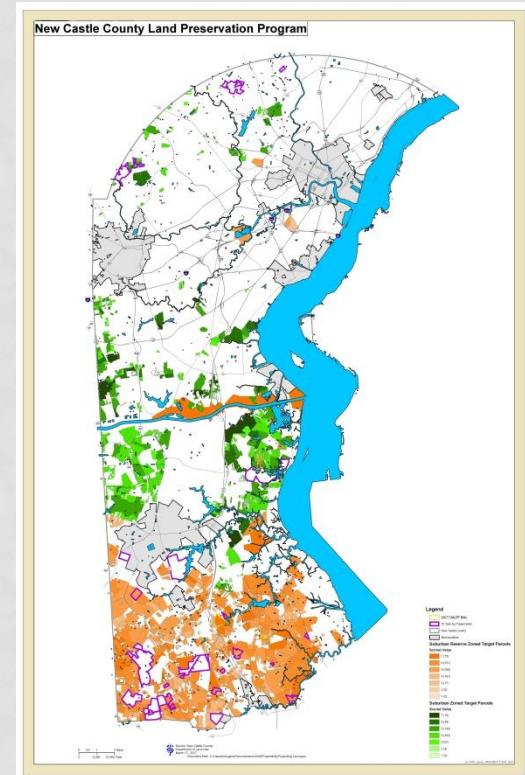
- Basic Criteria to be Eligible for County Investment:
 - Are located in the unincorporated area of New Castle County
 - Are at least ten (10) acres in size
 - Are zoned Suburban (S) and Suburban Reserve (SR) zoning districts
 - In an existing Agricultural District
 - Are classified as Level 3 & 4 areas in the 2010 Update to State Strategies for Policies and Spending for Delaware
 - Are not sewerred
 - Are not in areas proposed for or likely to be annexed into incorporated areas



NEW CASTLE COUNTY SELECTION CRITERIA

Sites that Satisfy the Basic Criteria for Investment are then evaluated for the presence of the following:

- Wetlands
- Floodplains
- Buffer Areas for Water Bodies (100')
- Forests
- Recharge Area Water Resource Protection Areas
- Critical Natural Areas as defined by DNREC
- Historic resources
- Soil Types
- Proximity to existing preservation easements (500')



Questions?