

# Dollar Tree



**NEW CASTLE COUNTY  
DEPARTMENT OF LAND USE**

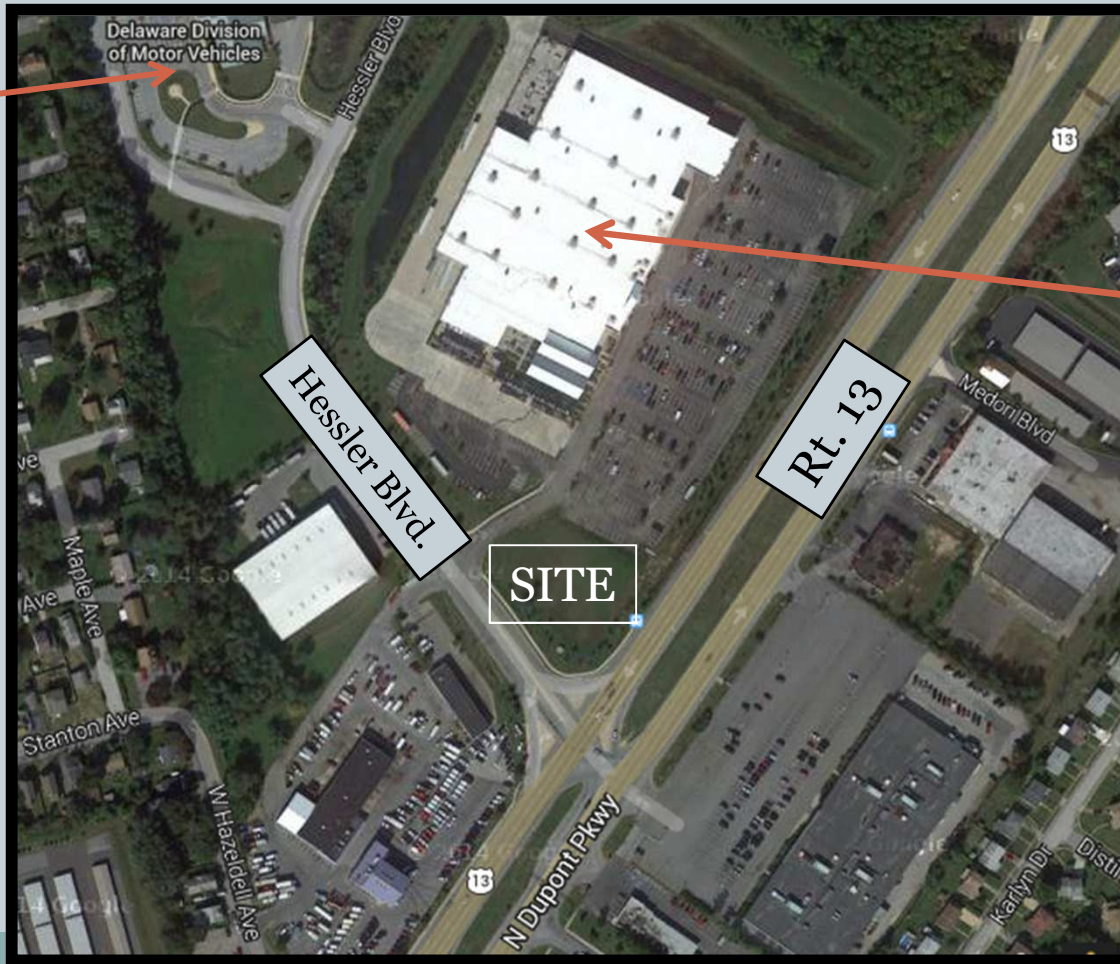
**COUNTY COUNCIL LAND USE COMMITTEE**

# Dollar Tree



- North of the intersection of Hessler Boulevard and Rt. 13

DMV



Lowe's

# Dollar Tree



- Parcel was previously rezoned from I to CR
- Previously approved Starbucks plan was not built
- Proposed 9, 180 SF Dollar Tree plan must follow the rezoning process
- The Department and Planning Board recommended approval