

The New Castle County Skate Park & Plaza

Liability and Safety

The Research

Update January 24, 2012

The Interviewees



- Users
- Private Concessionaires
- Government Agencies
- Mayor's Offices
- Park Directors

Published Facts

US Consumer Product Safety Commission

National Electronic Injury Surveillance System (NEISS) (Data 2009)

• Bicycles	544,470
• Basketball	501,251
• Football	451,961
• Baseball, Softball	286,708
• Playground Equipment	237,184
• Soccer	208,214
• Skateboards	144,416
• Volleyball	60,159

US Consumer Product Safety Commission

Estimated Emergency Room Treated Injuries

(Data 1998)

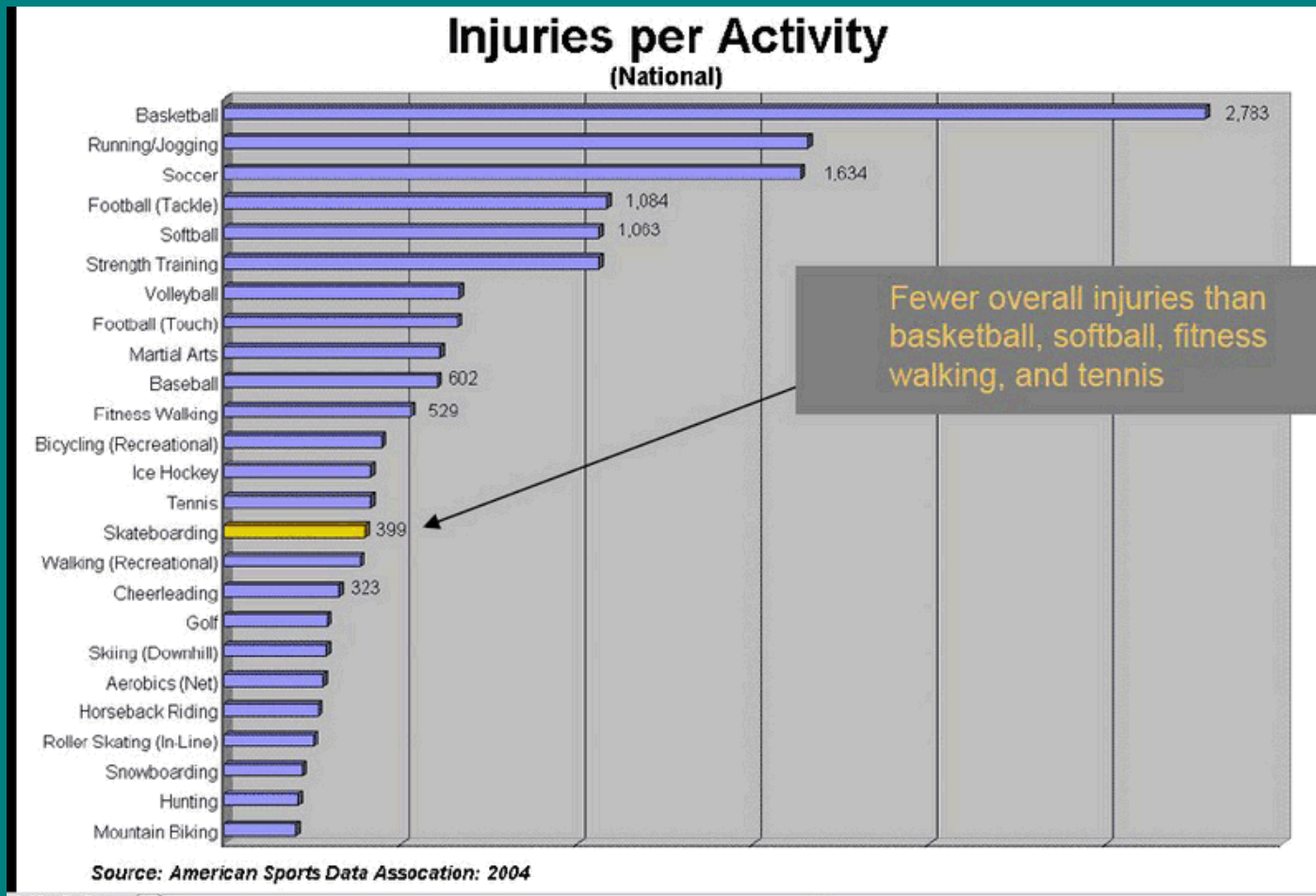
• Bicycles	66,000
• Basketball	49,000
• Baseball & Softball	41,000
• Football	12,000
• Soccer	11,000
• Swimming Pools	10,500
• Volleyball	10,000
• Tennis	5,000

US Consumer Product Safety Commission

(1999 Data)

• <u>Sport & Participation</u>	• <u>% Injured</u>
– <u>Football</u> 372,380	– <u>1.99%</u>
– <u>Baseball</u> 195,115	– <u>1.61%</u>
– <u>Basketball</u> 597,224	– <u>1.52%</u>
– <u>Soccer</u> 175,303	– <u>1.00%</u>
– <u>Skate Board</u> 59,964	– <u>0.77%</u>
– <u>Softball</u> 144,806	– <u>0.73%</u>
– <u>Tennis</u> 25,181	– <u>0.15%</u>

Injuries Per Activity



NCCo Constructed Park Amenities Ranked Higher in Injuries than Skateboarding



However,

Our Most Dangerous Activities -

Sledding Without Snow & Jumping From Moving Swings



Skate Board Park Safety and Liability Issues Synopsis

Gathered From a Random Sampling of Facilities Throughout the U.S.
(East Coast, Mid-west, West Coast, Local Area)

*Information compiled from phone interviews conducted during July/August 2010

***Information updated January 2012**

2010 Selected Jurisdictions Included:

Raleigh, NC
Ocean City, MD
West Springfield, MA
West Palm Beach, FL
North Little Rock, AR
Champaign, IL
Austin, TX
Colorado Springs, CO
San Diego, CA
Portland, OR

2012 Additional Jurisdictions Included:

Gaithersburg, MD
Norfolk, VA
Baltimore, MD
Lancaster County, PA
Newark, DE

Findings

2010 (No Changes Reported)

- Facility attended? 3 yes / 7 no
- Facility fenced? 5 yes / 5 no
- User fee? 2 yes / 8 no
- Injuries reported? 3 yes / 7 no
- Lawsuits? 0 yes / 10 no
- Insurance purchased? 0 yes / 9 no
(1 maybe but didn't know)

2012

- Facility attended? 1 yes / 4 no
- Facility fenced? 3 yes / 2 no
- User fee? 1 yes / 4 no
- Injuries reported? 3 yes / 1 no
- Lawsuits? 0 yes / 4 no
- Insurance purchased? 0 yes / 5 no

Fenced or Un-Fenced Supervised or Un-Supervised

Research Performed June 2010 By Mark B. Calder

Supplemental info - Mid- Atlantic Region skateparks		Fence - No Fence -- Manned - Unmanned				
State	Name or city/county	Fence	Manned	Comment		
DE	Smyrna	Yes	No	Former Tennis Court	Public	Free
DE	Townsend	No	No	Occasional patrol	Public	Free
DE	Newport	Yes	Yes	Not a public park	Private	Fee
MD	Ocean Pines	Yes	No	Occasional patrol	Public	Free
MD	Bowie, Allen Pond Park	*Yes	No	Partially fenced w/ split rail, Occasional patrol	Public	Free
MD	Greenbelt	Yes	No	4 ft black vertical alum fencing, Occasional patrol	Public	Free
PA	York, Reid Menzer Memorial park	Yes	No	Patrolled, not done by a skatepark builder, not well done/like d	Public	Free
PA	Lancaster County	Yes	No		Public	Free
PA	Patrick Kerr Mem. Roslyn/Abington	Yes	No		Public	Free
PA	Pop's Skate park	*Yes	No	Former Tennis Court	Public	Free
NJ	Sayreville	*Yes	No	4 ft black vertical alum fencing on outskirts	Public	Free
NJ	Maple Shade	Yes	No	Patrolled	Public	Free
NJ	Moorestown, David Gentilee	Yes	No	Closed for repairs, a skatelite park	Public	Free

Franklin's Paine Receives \$1 Million

Capital Funding Commitment for Paine's Park from

Philadelphia Parks and Recreation

Pennsylvania skate parks that maintain a “Skate At Your Own Risk” and “Protective Equipment Strongly Recommended” policy

[Manheim Township, PA](#)

[Bloomsburg Town Skatepark, PA](#)

[Tarentum Skatepark, PA](#)

[City of Warren Skatepark, PA](#)

[Reid Menzer Memorial Skatepark, York PA](#)

[Falls Township Skatepark, PA](#)

[West Goshen Skatepark, PA](#)

[Upper Providence Township Skatepark, Oaks, PA](#)

[Whitehall Skatepark, PA](#)

[Nazereth Borough Skatepark, PA](#)

Portland, Oregon

References:

Mayor Sam Adams & Chief of Staff Tom Miller

“I can also say without hesitation that Portland’s development of skate parks has enhanced our community livability and relative attractiveness.”



PORTLAND PARKS & RECREATION

Healthy Parks, Healthy Portland

Portland, Oregon

- **19: PORTLAND'S SKATEPARK MASTER PLAN**
- Portland is, to our knowledge, the first city in the world to have a comprehensive master plan for skateboard park development. Passed by city council ordinance on August 3, 2005, the plan recommends 3 types of skateparks — **19 in total** — 13 neighborhood skate spots, 5 district-wide skateparks, and one central city anchor park.
- SPS conceived of and advocated for the plan to Portland Parks & Recreation. It was adopted by Parks' skatepark advisory committee, carefully applied to existing park sites over a 24-month planning and public input period, and ultimately supported by Portland's five elected officials, its city council. The idea for a skatepark master plan is based on the idea that skateboarders deserve an appropriate scope of safe, well-designed facilities just like any other recreational activity.

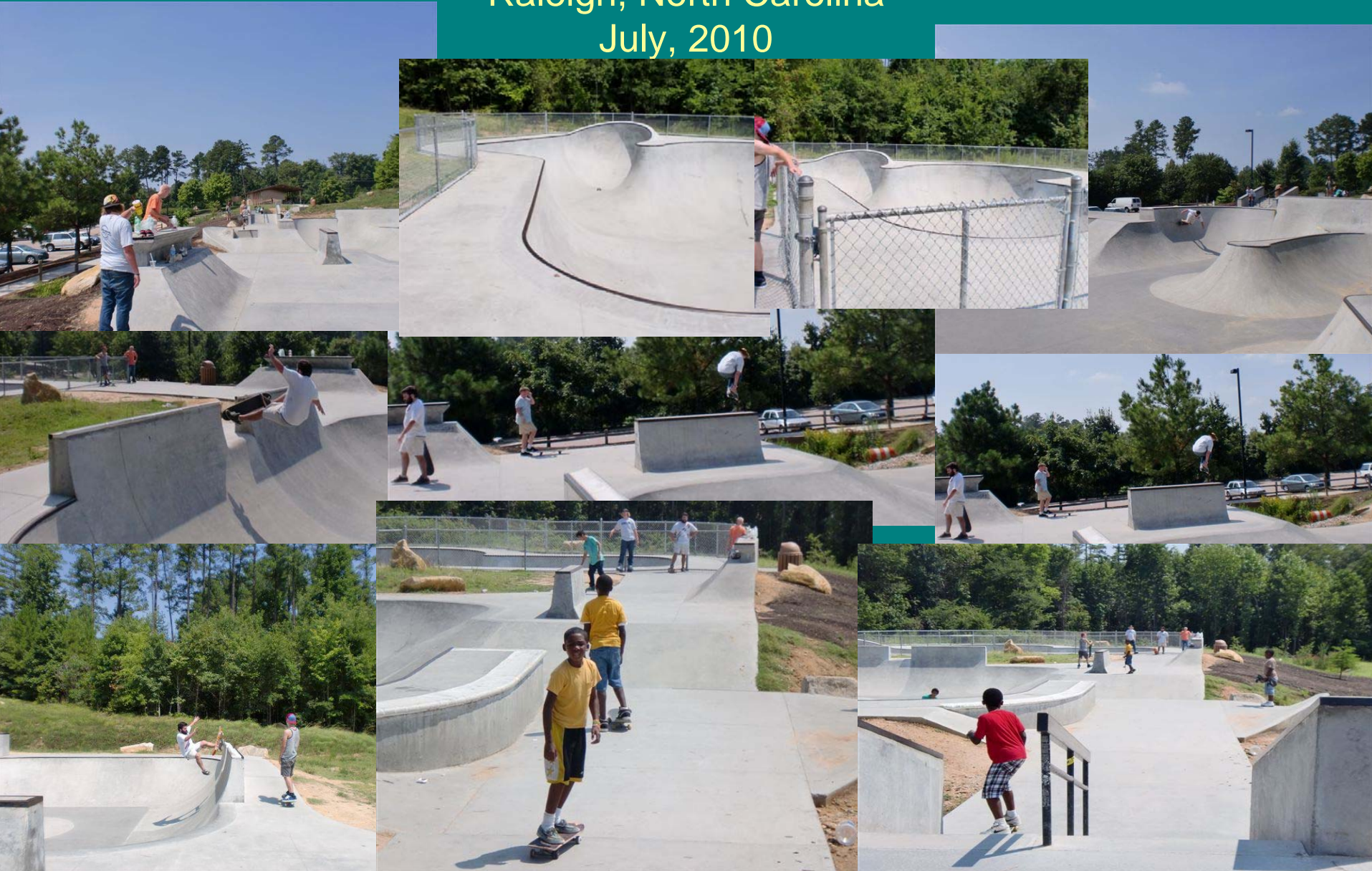
Portland, Oregon



Marsh Creek Skate Park

Raleigh, North Carolina

July, 2010



Park City Skate Park

Park City, Utah



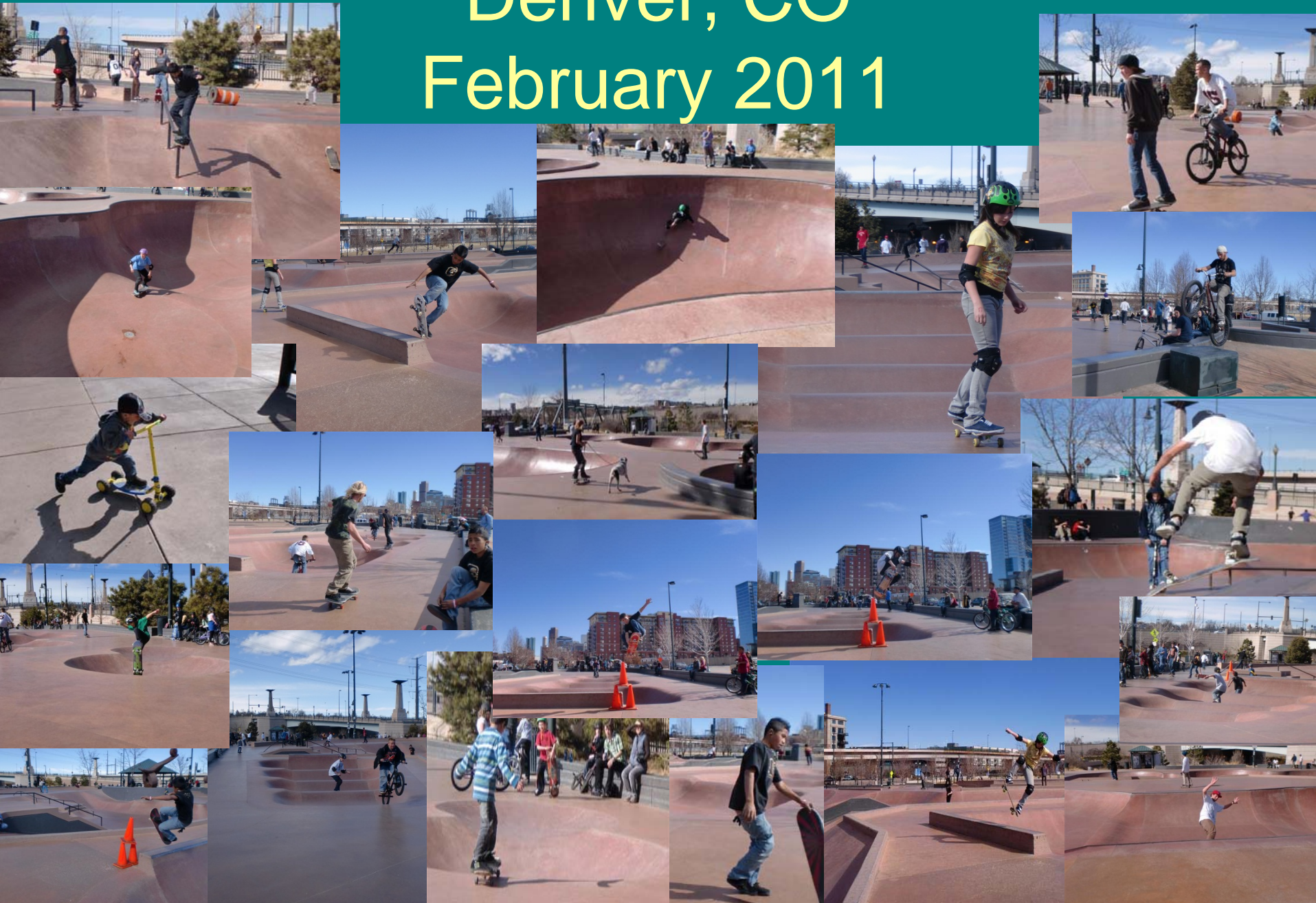
Kettering Skate Plaza

Kettering State Park, Ohio



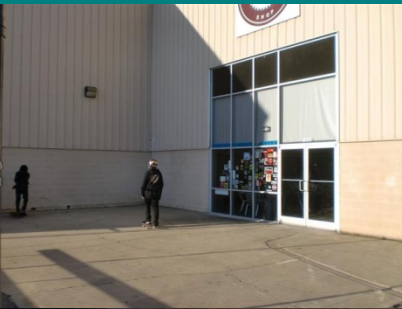
Denver, CO

February 2011



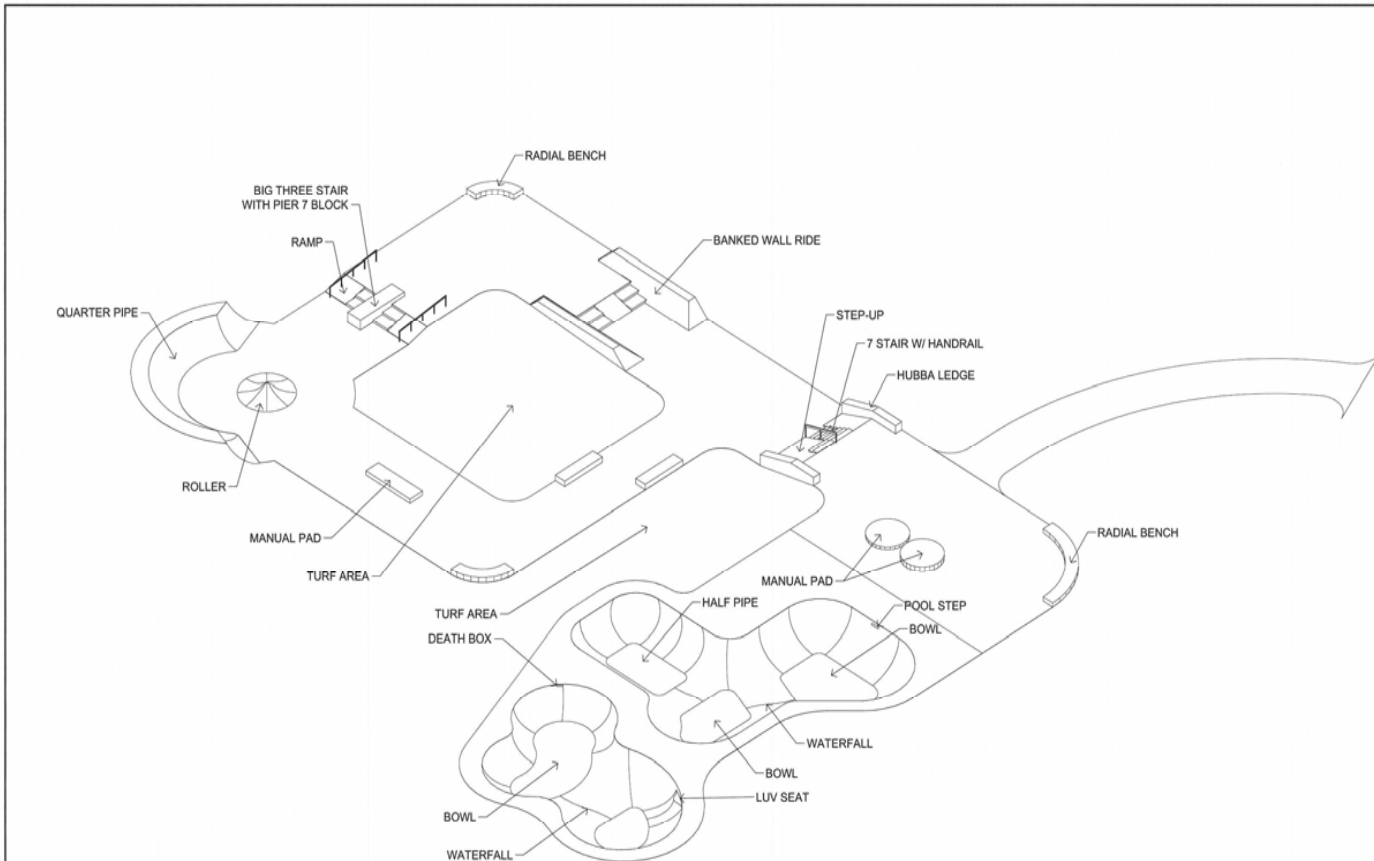
The Factory Skateboard Shop

Raleigh, NC
January, 2012



Glasgow Regional Skate Park

New Castle County, DE



NOT TO SCALE

REV	DESCRIPTION	DRAWN	DATE	OWNER	ENGINEER	APPROVALS	DATE	SHEET TITLE
1	ISSUED FOR BIDDING	DCN	4/12/10	NEW CASTLE COUNTY 87 READS WAY NEW CASTLE, DE 19720	NEW CASTLE COUNTY DEPARTMENT OF SPECIAL SERVICES 187-A OLD CHURCHMANS ROAD NEW CASTLE, DE 19720	DRAWN BY: DCN	4/12/10	SKATE PARK - AXON
2						CHECKED BY: RLP/DCN	4/12/10	
3						ENGINEER: DCN	4/12/10	
4						OPERATIONS:		
5						REVISION: 1	4/12/10	



NEW CASTLE COUNTY DEPARTMENT OF SPECIAL SERVICES GLASGOW REGIONAL PARK SKATE PARK	SCALE: AS NOTED	SHEET NO. 58 OF 74
--	-----------------	--------------------

SP-0.3

Glasgow Regional Skate Park

New Castle County, DE



GLASGOW REGIONAL PARK

1. SKATE AT YOUR OWN RISK. THIS PARK IS A NON-SUPERVISED FACILITY. THIS PARK MAY ONLY BE USED BY SKATEBOARDERS AND IN-LINE SKATES, MOTORCYCLES, HOLLERSKATES AND OTHER WHEELED DEVICES ARE NOT PERMITTED.
2. PROTECTIVE EQUIPMENT SHOULD BE USED AT ALL TIMES. USE OF THIS FACILITY MAY EXPOSE THE USER TO SERIOUS INJURY INCLUDING BROKEN BONES, FRACTURES, OR DEATH.
3. THIS PARK WILL BE CLOSED FROM DAWN TO DUSK.
4. NO SKATING WHEN WET OR SLIPY.
5. NO LOITERING OR SMOKING. PLEASE PUT TRASH IN DESIGNATED TRASH RECEPTACLES.
6. THIS PARK IS A DRUG-FREE RECREATION AREA.
7. BE COURTEOUS TO OTHER PEOPLE USING THE PARK AND ALL OTHER PARK PATRONS.
8. CONDUCTIVE OR DEMONSTRATION SPORTS SECURE SPECIAL APPROVAL. CONTACT THE NEW CASTLE COUNTY DEPARTMENT OF COMMUNITY SERVICES.

Austin BMX & Skate Park

1213 Shoal Creek Blvd.

RULES OF CONDUCT:

- Facility CLOSED from 10PM - 5AM daily.
- Use of helmets, knee and elbow pads recommended.
- Plastic pegs only on BMX bikes.
- Motorized vehicles prohibited.
- Food, drinks, and smoking on riding surfaces prohibited.
- Graffiti, tagging, and stickers prohibited. Vandalism will close the park until repairs are made.
- Inspect riding surfaces before use. Remove trash or debris that may prevent a smooth, safe ride.
- Do not ride on damaged surfaces, when wet, raining, during electrical storms or maintenance.

IN CASE OF EMERGENCY, CALL 911

For non-emergency concerns, call 311.

WARNING

TEXAS LAW (CHAPTER 75, CIVIL PRACTICE AND REMEDIES CODE) LIMITS THE LIABILITY OF A GOVERNMENTAL UNIT FOR DAMAGES ARISING DIRECTLY FROM HOCKEY, IN-LINE HOCKEY, SKATING, IN-LINE SKATING, ROLLER-SKATING, SKATEBOARDING, ROLLER-BLADING, PAINTBALL USE, SOAP BOX DERBY USE, OR BICYCLING ACTIVITIES ON PREMISES THAT THE GOVERNMENTAL UNIT OWNS, OPERATES OR MAINTAINS FOR THAT PURPOSE.



Attention

Holly Farm Park Skatepark Users

Open Hours: Dawn to Dusk

General Skatepark Rules

- BMX bike metal stunt pegs are not allowed anywhere in Holly Farm Park. Plastic stunt pegs may be used.
- Please be respectful of the neighbors. Keep noise levels down so they can't hear you from their homes.
- Abusive, threatening or obscene language is prohibited.
- Litter, graffiti, and tagging are prohibited. It costs money to address these issues—money that could help fund future skateparks like this.
- Alcohol, tobacco, and drugs are prohibited.
- Please respect the hard work that skateboarders, BMX riders, and others have done to make this skatepark possible. Be respectful of others, maintain control, and use this park in a safe manner.
- If you see someone acting inappropriately, be a mentor and share tips on skatepark etiquette.
- Thank you for complying with these rules. Any person violating city ordinances or state laws may be arrested, cited, and/or excluded from this facility. *Portland City Code 20.12.265*

In case of emergency: Police/Fire/Medical: Dial 9-1-1
Police non-emergency: 503-823-3333 Park Address: 10819 SW Capitol Hwy.

WARNING

Skateboarding, skating, and biking can be hazardous recreational activities and can cause serious injury. All surfaces of this park are extremely dangerous when wet. Holly Farm Skatepark is unsupervised. Any use of the skatepark is at your own risk.

Oregon law requires youth 15 years of age and younger to wear safety helmets when riding skateboards, in-line skates, and bicycles in public places. Portland Police officers will be issuing tickets with fines for non-compliance with this law.

Helmets are highly recommended for all users. Other protective equipment such as wrist guards, elbow pads, and knee pads is also strongly recommended.

Be safe so you can come back and enjoy this park again.

Helmet law - ORS 814.600 and 814.485



PORTLAND PARKS & RECREATION

Healthy Parks, Healthy Portland

www.PortlandParks.org
503-823-PLAY

Commissioner Dan Saltzman
Director Zari Santer

Attention Ed Benedict Skate Plaza Users

Open Hours: Dawn to Dusk

General Skate Plaza Rules

- Bikes are NOT allowed at Ed Benedict Skate Plaza.
- Please be respectful of the neighbors. Keep noise levels down so they can't hear you from their homes.
- Abusive, threatening or obscene language is prohibited.
- Litter, graffiti, and tagging are prohibited. It costs money to address these issues—money that could help fund future skateparks like this.
- Alcohol, tobacco, and drugs are prohibited.
- Please respect the hard work that skateboarders and others have done to make this skatepark possible. Be respectful of others, maintain control, and use this park in a safe manner.
- If you see someone acting inappropriately, be a mentor and share tips on skatepark etiquette.
- Thank you for complying with these rules. Any person violating city ordinances or state laws may be arrested, cited, and/or excluded from this facility. *Portland City Code 20.12.265*

In case of emergency: Police/Fire/Medical: Dial 9-1-1
Police non-emergency: 503-823-3333 Park Address: SE Powell Blvd & 102nd

WARNING

Skateboarding, skating, and biking can be hazardous recreational activities and can cause serious injury. All surfaces of this park are extremely dangerous when wet. Ed Benedict Skate Plaza is unsupervised. Any use of the skate plaza is at your own risk.

Oregon law requires youth 15 years of age and younger to wear safety helmets when riding skateboards, in-line skates, and bicycles in public places. Portland Police officers will be issuing tickets with fines for non-compliance with this law.

Helmets are highly recommended for all users. Other protective equipment such as wrist guards, elbow pads, and knee pads is also strongly recommended.

**Be safe so you can come back and
enjoy this park again.**

Helmet law - ORS 814.600 and 814.485



PORTLAND PARKS & RECREATION

Healthy Parks, Healthy Portland

www.PortlandParks.org
503-823-PLAY

Commissioner Nick Fish
Director Zari Samner



Denver Skatepark
Department of Parks and Recreation
City and County of Denver

FACILITY RULES AND REGULATIONS
(Enforceable under Denver Municipal Code, Chapter 39, Article 1)

1. The skatepark is open daily from 5 a.m. to 11 p.m. It is unlawful for any person, other than authorized personnel, to enter or remain in this facility beyond the posted hours.
2. WARNING: Know your abilities and use this facility at your own risk.
3. The use of appropriate safety equipment such as helmets, knee pads, elbow pads, wrist pads, gloves, and proper shoes is strongly recommended at all times.
4. CAUTION: SLIPPERY WHEN WET. Weather and lighting conditions may cause unsafe surface conditions.
5. Be courteous to others. Users must be under control at all times. Uncontrolled skating and other activities that endanger others will not be tolerated and will result in ejection from the skatepark.
6. The City and County of Denver has the right to close the facility without notice.
7. Youth under 10 years of age must be accompanied by an adult.
8. Permitting is required for special events. Contact Denver Parks and Recreation Permitting at (720) 913-0700.
9. No wheels over 20" diameter permitted in the park.
10. NO PEGS allowed on bikes.
11. Modifications to any element of area or structures of makeshift nature are prohibited. Skate ramps or other skating structures are prohibited.
12. No motorized equipment is permitted.
- 13.* Use of drugs, alcohol, or tobacco products is prohibited.
14. No loud music, use of profanity, deliberately offensive conduct, or any other disturbance of peace is allowed.
15. No glass is allowed in the skatepark.
16. Destroying or defacing public property, including the application of stickers, or graffiti, is prohibited. Littering on public property is prohibited. Take pride in YOUR skatepark.
17. All animals must be on a leash and kept outside of skating area.
18. Other rules and regulations applicable to the public's use of Denver Parks will be enforced in the skatepark.

IN CASE OF EMERGENCY, CALL 9-1-1

For skatepark information,
or to report maintenance problems call (720) 913-0786

Marsh Creek Skate Park

Rules

1. Enter at your own risk. Flying objects are not uncommon. Skate within your abilities. Stay in control of your equipment. Watch out for other skaters.
2. Signed waivers are required for all skate park participants BEFORE using the skatepark.
3. Appropriate safety gear must be worn at all times. Violation of skatepark rules, including failure to wear a proper helmet, kneepads, elbow pads, and closed toed shoes will subject persons to citation and other consequences including expulsion from the skatepark.
4. Bicycles, scooters, glass containers, and outside ramps, jumps, and obstacles are prohibited. Restrict skating to features specifically designed for that purpose.
5. Respect skatepark surfaces - tagging or graffiti are not allowed.
6. Inspect skating surfaces before using and remove any trash or debris that may prevent a smooth, safe ride. Do not ride damaged, wet, or icy surfaces.
7. Report hazardous conditions, damages to skate park surfaces, and other maintenance concerns to the Parks and Recreation Department at 919-831-6640 or 919-565-6079.
8. This is a drug-free zone. Drug use/possession and alcohol consumption are prohibited.
9. Respect other park users - abusive language and loud music are not allowed within the park.
10. The City of Raleigh reserves the right to change the hours of operation.
11. Call 9-1-1 in the event of an emergency.

Mount Trashmore Skate Park

Virginia Beach, Virginia



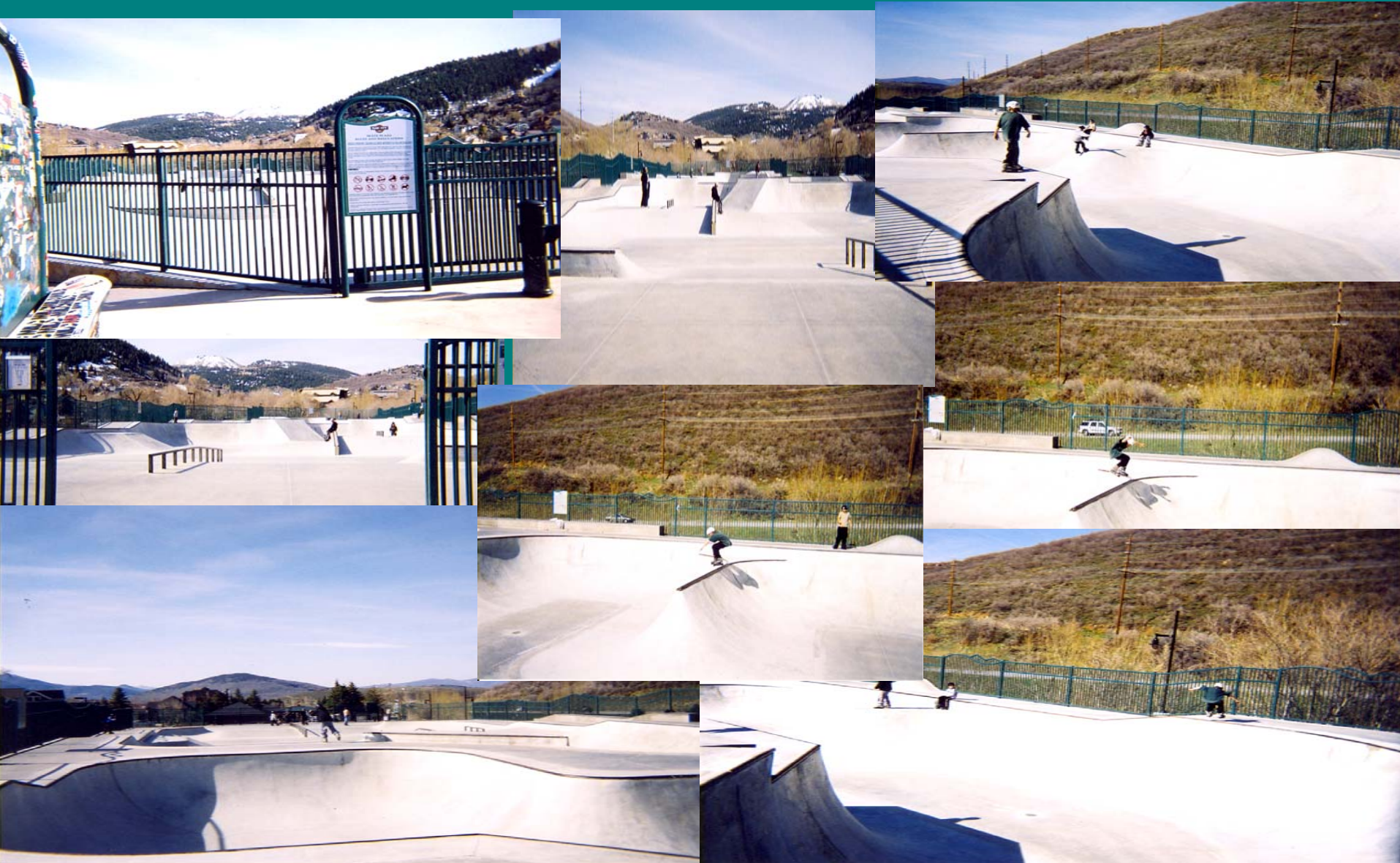
Mount Trashmore Skate Park General Guidelines

Virginia Beach, Virginia



PARK CITY SKATE PLAZA

Park City, Utah



PARK CITY SKATE PLAZA RULES AND REGULATIONS

Park City, Utah



The Beginning



Questions?

Marsh Creek Skate Park Rules

Raleigh, North Carolina

1. Enter at your own risk. Flying objects are not uncommon. Skate within your abilities. Stay in control of your equipment. Watch out for other skaters.
2. Signed waivers are required for all skate park participants BEFORE using the skatepark.
3. Appropriate safety gear must be worn at all times. Violation of skatepark rules, including failing to wear a proper helmet, kneepads, elbow pads, and closed toed shoes will subject persons to citation and other consequences including expulsion from the skatepark.
4. Bicycles, scooters, glass containers, and outside ramps, jumps, and obstacles are prohibited. Restrict skating to features specifically designed for that purpose.
5. Respect skatepark surfaces – tagging or graffiti are not allowed.
6. Inspect skating surfaces before using and remove any trash or debris that may prevent a smooth, safe ride. Do not ride damaged, wet, or icy surfaces.
7. Report hazardous conditions, damages to skate park surfaces, and other maintenance concerns to the Parks and Recreation Department at 919-831-6640 or 919-565-6079.
8. This is a drug-free zone. Drug use/possession and alcohol consumption are prohibited.
9. Respect other park users – abusive language and loud music are not allowed within the park.
10. The City of Raleigh reserves the right to change the hours of operation.
11. Call 9-1-1 in the event of an emergency.

Mount Trashmore Skate Park General Guidelines

Virginia Beach, Virginia

- When skaters/bikers follow the guidelines, everyone's enjoyment of the skate park is enhanced. Please be a responsible skater/biker and support our skate park guidelines.
- DO WEAR YOUR HELMET AT ALL TIMES.
- DO USE APPROPRIATE LANGUAGE AT ALL TIMES.
- DO ABIDE BY PARK PERSONNEL REQUESTS. THEY WILL MONITOR AND SPOT CHECK USAGE AND COMPLIANCE.
- DO ASSUME STEWARDSHIP OF THIS PARK. PLEASE HELP KEEP IT CLEAN – YOU ARE THE USER.
- DO RESPECT ALL USERS' SKILL LEVELS.
- DO RESPECT ALL SPECTATORS.
- DO REFRAIN FROM ALCOHOL OR DRUG USE.
- SCOOTERS ALLOWED ONLY DURING LOW USE PERIODS.
- The success of this skate park is measured on how well the users follow the guidelines. If guidelines are not followed, you will be asked to leave the park.
- **SKATE PARK HOURS: 7:30 A.M. TO SUNSET DAILY WHEN PARK IS OPEN.**

PARK CITY SKATE PLAZA

RULES AND REGULATIONS

Park City, Utah

- HOURS OF OPERATION: SKATING ALLOWED BETWEEN 9:00 A.M. AND DUSK ONLY
- THE SKATE PLAZA IS A SKATE-AT-YOUR OWN-RISK FACILITY. THIS IS A NON-SUPERVISED FACILITY DESIGNED FOR SKATEBOARDING (34" MAXIMUM LENGTH), AND IN-LINE SKATING (NO SPEED SKATES) ONLY.
- USE OF THESE FACILITIES IS A HIGH-RISK ACTIVITY. PROTECTIVE EQUIPMENT INCLUDING HELMET, GLOVES, KNEE AND ELBOW PADS, WRIST PROTECTION AND PROPER SHOES SHOULD BE WORN AT ALL TIMES. USE OF THIS PARK MAY EXPOSE THE USER TO SERIOUS INJURY.
- SKATEBOARDS, SKATES, AND OTHER EQUIPMENT MUST BE IN GOOD REPAIR. USE THIS FACILITY WITHIN THE LIMITS OF YOUR ABILITIES.
- INSPECT THE SKATING SURFACES BEFORE YOU BEGIN USE. REMOVE ANY TRASH, DEBRIS OR OBJECTS ON SKATING SURFACES. DO NOT SKATE IF THERE IS DAMAGE TO THE SKATING SURFACE. REPORT ANY FACILITY DAMAGE IMMEDIATELY TO THE PARK CITY DISPATCH 435-615-5500.
- USE OF THIS FACILITY IS PROHIBITED WHEN THE SURFACES ARE WET OR DURING ROUTINE MAINTENANCE PERIODS.