



DEPARTMENT OF SPECIAL SERVICES

SEWER FUND

FY2017

**RECOMMENDED BUDGET
TO COUNTY COUNCIL**

April 25, 2016

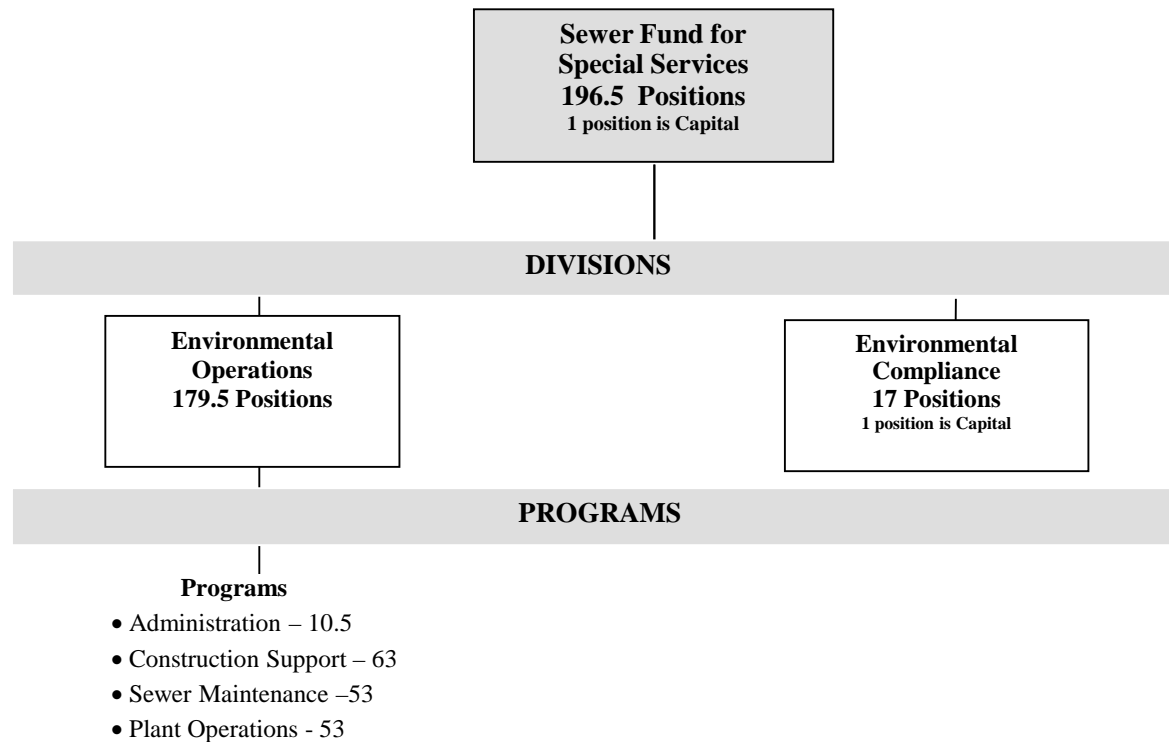


Department of Special Services

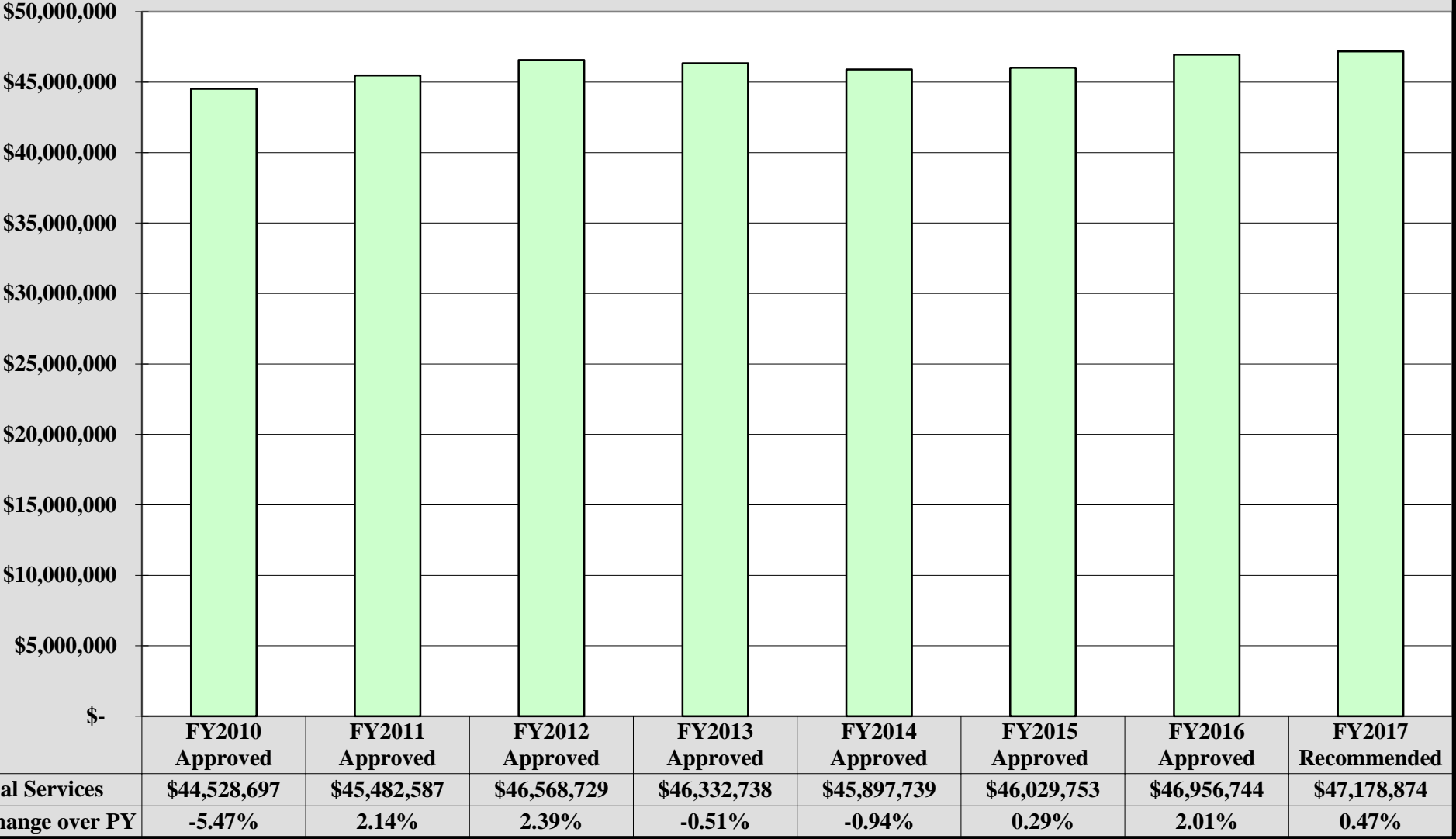
FY2017 Sewer Fund

MISSION

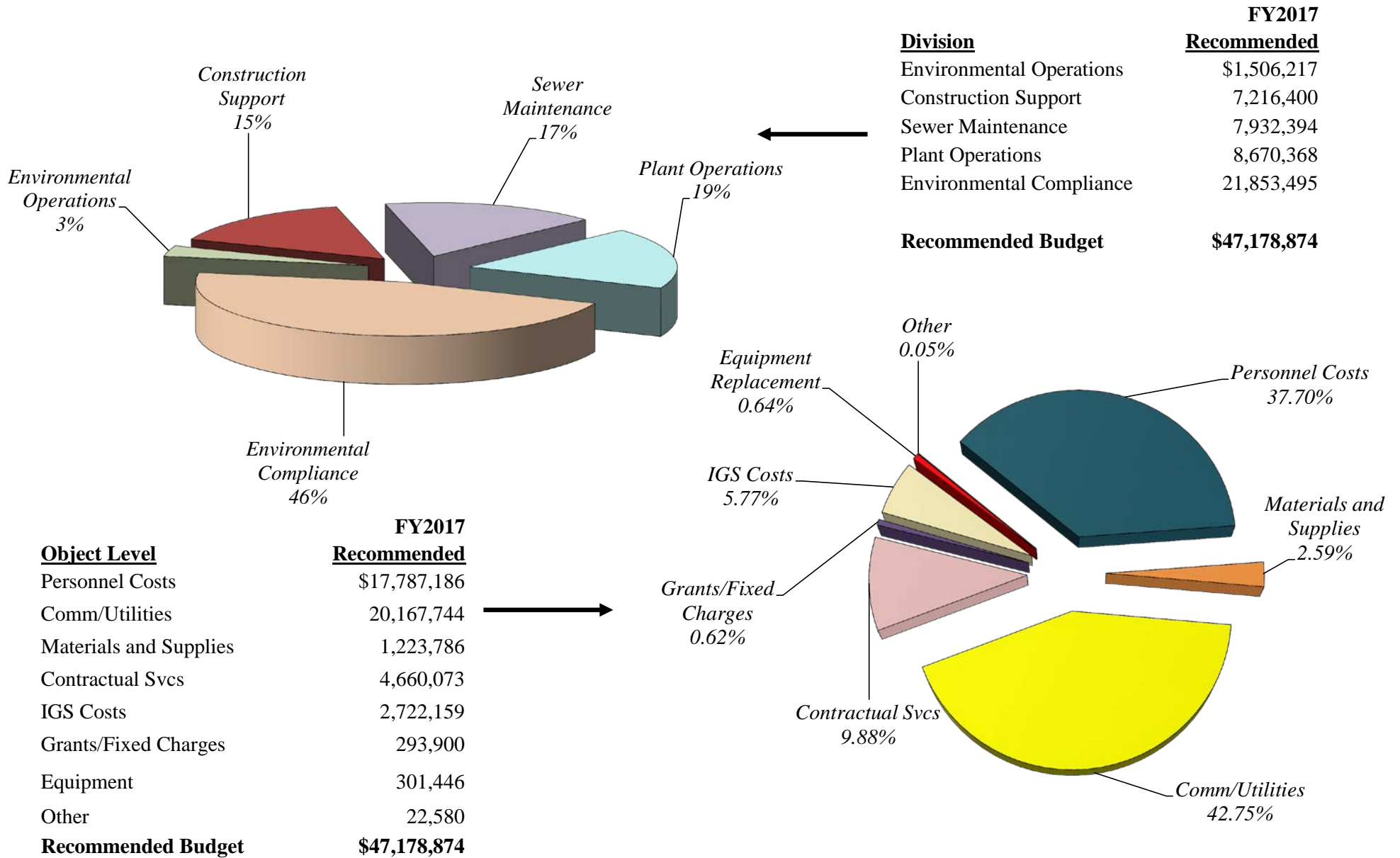
The Department's main goal is to maximize services to County Residents as efficiently as possible. The Department is responsible for all buildings, parkland, vehicles and equipment, sanitary sewer and stormwater infrastructure lines, pump stations and treatment plants. The Department strives to offer residents beautiful places to enjoy their leisure, keep County vehicles in optimum working condition, provide clean and safe facilities such as libraries, adult activity centers and recreation centers as well as to protect the environment through maintenance of a countywide sewer system and managing a storm water program.



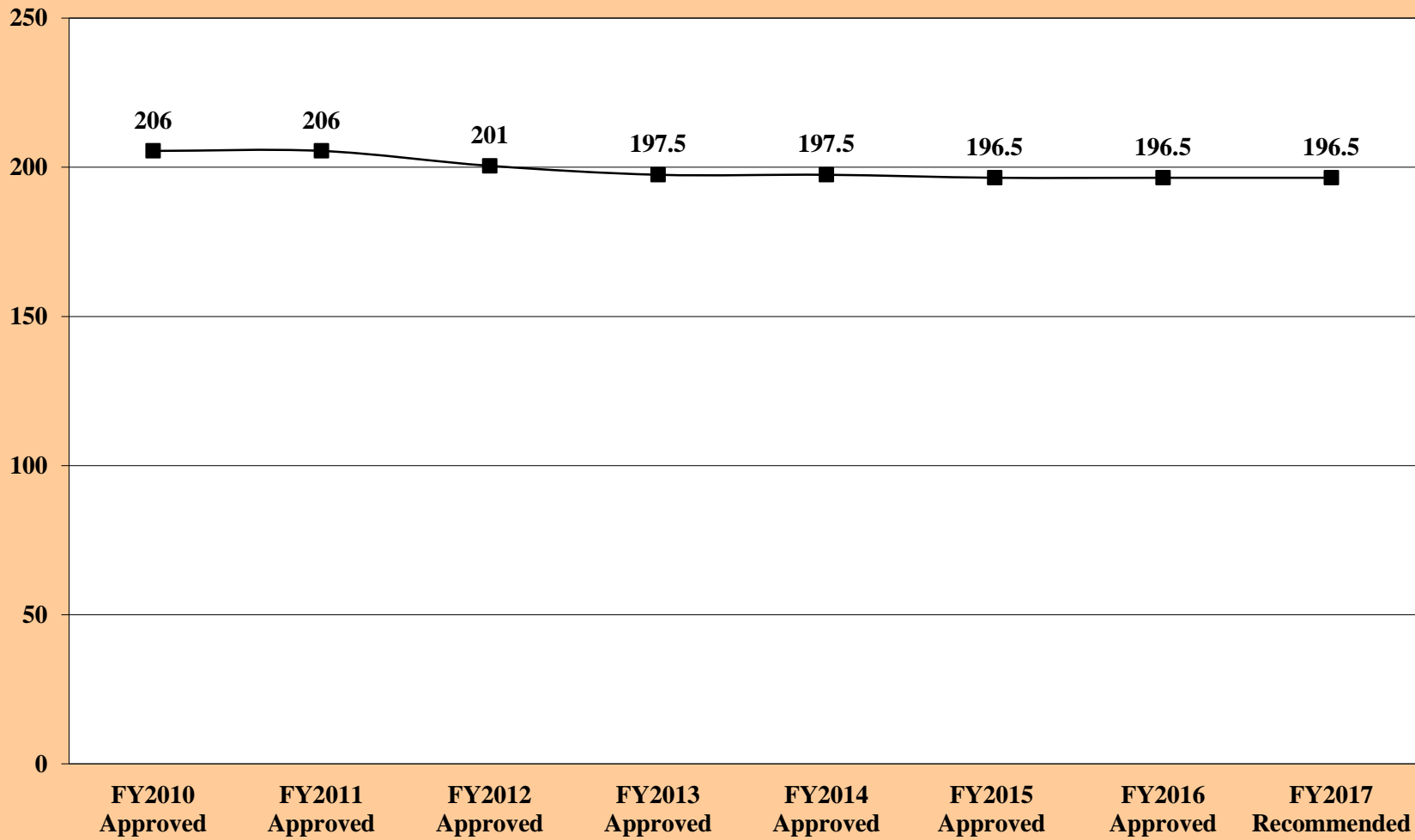
**Department of Special Services
Sewer Fund Budget History
FY2010 Approved through FY2017 Recommended**



**NEW CASTLE COUNTY
DEPARTMENT OF SPECIAL SERVICES
FY2017 SEWER FUND**



**Department of Special Services
Sewer Fund Position History
FY2010 Approved through FY2017 Recommended**



**DEPARTMENT OF SPECIAL SERVICES
FY2017 SEWER FUND BUDGET PRESENTATION
CALENDAR YEAR 2015 DIVERSITY**

JOB CATEGORIES		NUMBER OF EMPLOYEES											
		Overall Totals (Sum of Col. B-K)	MALE						FEMALE				
			White (Not of Hispanic Origin)	Black (Not of Hispanic Origin)	Hispanic	Asian or Pacific Islander	American Indian or Alaskan Native	White (Not of Hispanic Origin)	Black (Not of Hispanic Origin)	Hispanic	Asian or Pacific Islander	American Indian or Alaskan Native	
			A	B	C	D	E	F	G	H	I	J	K
Officials and Administrators	1	1	1										
Professionals	2	15.5	9					5.5	1				
Technicians	3	12	10	1				1					
Protective Service Workers	4	0											
Paraprofessionals	5	0											
Administrative Support	6	8	3					4	1				
Skilled Craft Workers	7	105	88	11	5			1					
Service-Maintenance	8	31	16	13	1				1				
Certain Elected/Appointed Officials	9	0											
TOTAL as of 12/31/2015	10	172.5	127	25	6	0	0	11.5	3	0	0	0	0

DEPARTMENT OF SPECIAL SERVICES - SEWER FUND
2013-2015 DIVERSITY COMPARISON

JOB CATEGORIES		NUMBER OF EMPLOYEES											
		Overall Totals (Sum of Col. B-K)	MALE					FEMALE					
			White (Not of Hispanic Origin)	Black (Not of Hispanic Origin)	Hispanic	Asian or Pacific Islander	American Indian or Alaskan Native	White (Not of Hispanic Origin)	Black (Not of Hispanic Origin)	Hispanic	Asian or Pacific Islander	American Indian or Alaskan Native	
			A	B	C	D	E	F	G	H	I	J	K
Officials and Administrators	2015	1	1										
	2014	1	1										
	2013	1	1										
Professionals	2015	15.5	9				5.5	1					
	2014	15.5	10				4.5	1					
	2013	15.5	11				3.5	1					
Technicians	2015	12	10	1			1						
	2014	12	10	1			1						
	2013	9	7	1			1						
Paraprofessionals	2015	0											
	2014	0											
	2013	0											
Administrative Support	2015	8	3				4	1					
	2014	8	3				4	1					
	2013	8	4				3	1					
Skilled Craft Workers	2015	105	88	11	5		1						
	2014	102	88	8	5		1						
	2013	103	89	8	5		1						
Service-Maintenance	2015	31	16	13	1			1					
	2014	34	19	13	1			1					
	2013	35	20	13	1			1					
Certain Elected/Appointed Officials	2015	0											
	2014	0											
	2013	0											
TOTAL as of 12/31/15	2015	172.5	127	25	6	0	0	11.5	3	0	0	0	0
	2014	172.5	131	22	6	0	0	10.5	3	0	0	0	0
	2013	171.5	132	22	6	0	0	8.5	3	0	0	0	0

**NEW CASTLE COUNTY
DEPARTMENT OF SPECIAL SERVICES
PART-TIME, SEASONAL, TEMPORARY DIVERSITY**

JOB CATEGORIES		NUMBER OF EMPLOYEES										
		Overall Totals (Sum of Col. B-K)	MALE					FEMALE				
			White (Not of Hispanic Origin)	Black (Not of Hispanic Origin)	Hispanic	Asian or Pacific Islander	American Indian or Alaskan Native	White (Not of Hispanic Origin)	Black (Not of Hispanic Origin)	Hispanic	Asian or Pacific Islander	American Indian or Alaskan Native
A	B	C	D	E	F	G	H	I	J	K		
Protective Services		0										
Professionals		0										
Paraprofessionals		9	3	4				2				
Administrative Support		0										
TOTAL as of 12/31/15		9	3	4	0	0	0	0	2	0	0	

State and Local Government Information (EEO-4) Report Format

These numbers encompass the entire Department of Special Services, both General and Sewer Funds.



**DEPARTMENT OF SPECIAL SERVICES
FY2017 RECOMMENDED BUDGET - SEWER FUND
TO COUNTY COUNCIL**

Object Level	FY2016 Approved	FY2017 Recommended	FY2016 Approved vs. FY2017 Recommended	% Incr (Decr) over FY2016 Approved
Salaries and Wages	\$ 11,318,928	\$ 11,526,231	\$ 207,303	1.83%
Employee Benefits	5,956,352	6,260,955	304,603	5.11%
Training and Civic Affairs	2,580	2,580	-	0.00%
Communication and Utilities	20,140,173	20,167,744	27,571	0.14%
Materials and Supplies	1,186,036	1,223,786	37,750	3.18%
Contractual Services	4,664,723	4,660,073	(4,650)	-0.10%
Equipment Replacement	248,546	301,446	52,900	21.28%
Fixed Charges	293,900	293,900	-	0.00%
Land/Structures	28,600	20,000	(8,600)	-30.07%
Contingency	-	-	-	N/A
IGS Costs	3,116,906	2,722,159	(394,747)	-12.66%
Total:	\$ 46,956,744	\$ 47,178,874	\$ 222,130	0.47%



**DEPARTMENT OF SPECIAL SERVICES
FY2017 REQUESTED BUDGET - SEWER FUND
TO COUNTY COUNCIL**

Object Level	FY17 Recommended	\$ Change	% Change
Salaries and Wages :	\$11,526,231	\$207,303	1.83%
<i>Change is attributed to:</i>			
Salaries & Wages Permanent - \$31,027		Salaries & Wages Overtime - \$176,276	
<i>Significant expenses include:</i>			
Salaries & Wages Permanent - \$10,234,383		Salaries & Wages Shift Differential - \$25,800	
Salaries & Wages Seasonal - \$46,832		Salaries & Wages Overtime - \$1,219,216	
Employee Benefits:	\$6,260,955	304,603	5.11%
<i>Change is attributed to:</i>			
Benefits Permanent - \$190,363		Benefits Overtime - \$114,240	
<i>Significant expenses include:</i>			
Benefits Permanent - \$5,577,738		Benefits Overtime - \$678,534	
Training and Civic Affairs:	\$2,580	\$0	0.00%
<i>Significant expenses include:</i>			
Membership Dues - \$2,000			
Communication and Utilities:	\$20,167,744	\$27,571	0.14%
<i>Change is attributed to:</i>			
Electric - \$130,000		Sewer Service, City of Wilmington - (\$99,579)	
<i>Significant expenses include:</i>			
Wilmington Treatment Plant - \$18,394,444		Telephone Service - \$32,500	
Sewer Service - Middletown - \$15,000		Telephone Local Data Service - \$39,000	
Electric/Gas Heat Service \$1,548,000		Cellular/Wireless Data Services - \$35,000	
Water Service - \$76,000		Landfill Charges - \$27,000	
Materials and Supplies:	\$1,223,786	\$37,750	3.18%
<i>Change is attributed to:</i>			
Medical/Safety Supplies - \$16,000		Small Tools - \$11,184	
<i>Significant expenses include:</i>			
Clothing & Uniforms - \$57,595		Equipment Repair Supplies - \$242,189	
Agricultural/Chemical Supplies - \$233,036		Medical & Safety Supplies - \$53,400	
Construction Materials - \$397,307		Electrical/Plumbing/Small Tools - \$170,184	
Office/Computer/Custodial Supplies - \$29,650		Gas & Welding/Diesel - \$28,000	
Contractual Services:	\$4,660,073	(\$4,650)	-0.10%
<i>Change is attributed to:</i>			
Landscape Services - \$35,700		Other Professional Services - (\$23,500)	
Equip/Facility Repairs - \$4,000		Vehicular Repairs - (\$10,000)	
Other Equipment - \$4,500		Service Contracts - (\$10,000)	
<i>Significant expenses include:</i>			
Vehicular & Equipment Repairs - \$398,852		Debris Pit Remediation - \$100,000	
Attorney Fees - \$40,000		Other Equipment Rental - \$74,900	
Other Professional Services - \$2,779,700		Engineering Services - \$728,854	
Facility Repairs - \$131,000		Sewer/Stormwater Infrastructure - \$221,635	
Radio/Communication Repairs - \$73,000		Service Contracts/Landscaping - \$47,282	
Car Wash Service/Chemical Analysis - \$15,600		Trash/Non Hazardous Disposal - \$30,500	



**DEPARTMENT OF SPECIAL SERVICES
 FY2017 REQUESTED BUDGET - SEWER FUND
 TO COUNTY COUNCIL**

Object Level	FY17 Recommended		\$ Change	% Change
Equipment Replacement:	\$301,446		\$52,900	21.28%
<i>Change is attributed to:</i>				
Non-motorized Equipment - \$46,000		Fixed Machinery - \$5,000		
<i>Significant expenses include:</i>				
Communication Equipment - \$11,000		Portable/Fixed/Special Purpose Machinery - \$116,846		
Construction Machinery - \$5,500		Building Equipment - \$22,500		
Safety Equipment - \$56,000		Non Motorized Equipment - \$57,000		
		Laboratory Instruments/Equipment - \$29,200		
Grants & Fixed Charges:	\$293,900		\$0	0.00%
<i>Significant expenses include:</i>				
Mandated Grants - New Castle Conservation District - \$120,000				
Pass thru Grants - University of Delaware Water Resources Agency - \$73,600				
Settlements - \$100,000				
Land/Structures:	\$20,000		(\$8,600)	-30.07%
<i>Significant expenses include:</i>				
Land Improvements Sewer - \$20,000				
IGS Costs:	\$2,722,159		(\$394,747)	-12.66%
<i>Change is attributed to:</i>				
IS Contract - Fleet Vehicles - (\$436,915)				
IS Contract - Data Processing - \$42,168				
<i>Significant IGS Costs include:</i>				
IS Contract - Fleet Vehicles - \$2,026,543		IS Contract - Data Processing - \$695,616		



**DEPARTMENT OF SPECIAL SERVICES
SUMMARY OF POSITION CHANGES
SEWER FUND POSITIONS**

USE ONE

Title	From OCA	To OCA	Position Control #	Refund	Transfer	Comments
Sanitary Maintenance Technician	40305	-	101314	1		Refund and retitle to Public Works Inspector

**NEW CASTLE COUNTY
DEPARTMENT OF SPECIAL SERVICES - SEWER FUND
FY2016 ACCOMPLISHMENTS**

- Advertised all remaining Phase I projects in the Brandywine Hundred sanitary sewer system. Completion of these projects should allow the County to eliminate the one remaining outfall to the Delaware River by the 2018 deadline.
- Completion of second and final phase of the Little Mill Creek Flood Control Project. The multi-agency sponsored project involved the widening and stabilization of the creek between Maryland Avenue and the Amtrak railroad.
- Cleaned 562 miles of sanitary sewers located in over 200 subdivisions and off-road areas using in-house equipment and operators.
- Cleared and field-marked 40,813 Miss-Utility sanitary sewer location requests with in-house personnel during the past year.
- Treated all high priority and secondary priority areas in the Chemical Root Control Program. All of these areas continue to experience a significant drop in root-related SSO's.
- Cleaned and CCTV'd the following: Sunnybrae Interceptor, White Clay Interceptor, A.I. DuPont/Barley Mill, Tanglewood, St. Joe on the Brandywine, East Minquadale, Evraz Steel, West Jackson Ave., Miller Road, Hockessin Corner, Old Forge Road, Prices Corner, Route 9 New Castle, and Cauline Court collection systems. All problems (sulfide corrosion, grease, roots, structural problems, etc.) were corrected upon discovery with CCTV.
- Rehabilitated or began rehabilitation of five wastewater pump stations to improve their reliability and/or extend their service life: Belltown III, Newport, Farnhurst, Brandywine Towers, and Cavaliers pumping stations.
- Upgraded the Delaware City Wastewater Treatment Plant.
- Continued major equipment and/or building rehabilitation projects at seven of the largest pumping stations using a combination of contract vendors and Plant Operations personnel: Edgemoor, Buttonwood, Stoney Creek; White Clay; Naamans; Terminal Avenue; and Christiana.
- Repaired 6 County-owned stormwater facilities at a lower cost than if contracted out. Tasks included sediment removal, replacement of rip rap fore bays, replacement of reinforced concrete and corrugated metal pipe, repairs to outlet structures and the total removal/replacement of the bio-retention pond/swale planting media.
- Performed 67 sanitary sewer repairs with in-house personnel during the first six months of FY2016: 20 of these repairs (or 30% of the total) were completed on an emergency basis. Crews also replaced 502 feet of lateral pipe and 379 feet of main pipe for a total of 881 feet of pipe repairs.
- Inspected approximately 1,953 residential and commercial stormwater management facilities within the County and sent detailed reports to their owners with a staff of three full-time employees.
- Provided oversight of the 1,351 commercial food establishments that discharge into the County's sanitary sewer system to insure compliance with fats, oils, and grease regulation.
- Successfully ran the Great Schools Clean Streams campaign designed to keep residents from dumping grease into our sewer system. Over 2,450 residents signed the pledge to properly manage their cooking grease. Over 655,000 residents saw our ads.
- Ran the successful 302-STOPPIT campaign designed to encourage residents to report illegal dumping of hazardous materials into the storm drain system. Over 10 million impressions were made and residents responded favorably in a telephone survey. Reports continue to be received on our hotline.

**NEW CASTLE COUNTY
DEPARTMENT OF SPECIAL SERVICES - SEWER FUND
FY2017 GOALS/CHALLENGES**

Goals

- Develop benchmarks and improve service delivery by utilizing advanced data collection and GIS coordination enabled by the Department's new work order system, Cityworks.
- Continue to reduce our response time for sanitary sewer emergencies. Our goal, once receiving a call, is to investigate the problem and start the necessary repairs or bypass pumping in one hour or less.
- Increase public education and awareness with respect to stormwater and sanitary sewer issues to encourage water quality initiatives.
- Continue work on Water Quality Implementation Plans designed to meet TMDLs and required effective impervious area reductions for the Christina River and Dragon Run as required by our NPDES storm water permit.
- Using Cityworks and data input from the Environmental Operations Division, develop a framework for a proactive capital improvement program consistent with asset management principles.
- Expand the number of areas where grease control and root control chemicals are introduced into the sewer system to reduce main line blockages caused by grease and tree roots that cause back-ups and sanitary sewer overflows.
- Continue to replace and upgrade sewer maintenance equipment on a scheduled basis to maximize the efficiency and effectiveness of the equipment.
- Advertise and begin construction of the final phase of the Governor Printz Interceptor project.
- Complete a condition assessment of the pump stations to facilitate a proactive capital program for pump station rehabilitation.
- Upgrade the SCADA System to provide more accurate information about pump station operation. This will reduce the number of station visits each week and allow more time for corrective and preventative maintenance.

Challenges

- Maintaining expected levels of service and meeting increasing regulatory demands with reduced resources and staff levels. Past budget cuts have resulted in reduced service levels and maintenance deferrals which will take time to correct.
- Protection of Christiana River Forcemain (CRFM), a critical high-volume wastewater transmission pipeline, as construction technology increasingly moves to horizontal drilling of new utilities.
- Establishing contingency plans to minimize damages in the event of a CRFM emergency while initiating long-term planning for building redundancy into the system.
- Inspecting all residential and commercial stormwater management facilities as required by the NPDES stormwater permit and a federal consent decree. A three-person full-time staff currently handles 1,953 facilities with approximately 125 being added each year. Another stormwater inspector is being requested in fiscal year 2017.

I. VACANCIES



New Castle County
Department of Special Services - Sewer Fund
Vacancies as of March 31, 2016

Division	Description	Date Vacated	Vacant
Environmental Compliance	Public Works Inspector	8/1/08	1
Construction Support	Crew Chief I	5/24/14	
	Maintenance & Construction Worker	11/9/15	
	Mason Supervisor	12/20/12	
	Motor Equipment Operator III	3/19/16	
	Pipelayer Supervisor	3/19/16	
	Pipelayer Supervisor	7/21/14	
	Unfunded Maintenance & Construction Worker	1/1/10	7
Environmental Operations	Special Services Data Technician	7/7/12	1
Sewer Maintenance	Crew Chief I	12/26/2015	
	Crew Chief II	12/31/2015	
	Maintenance & Construction Worker	12/31/15	
	Motor Equipment Operator I	3/23/15	
	Motor Equipment Operator II	8/22/2015	
	TV/Grouter Equipment Operator	12/20/2014	6
Plant Operations	Jr. Electronics Technician	6/18/12	
	Maintenance Office Administrator	9/29/12	
	Master Mechanic	1/18/11	
	Motor Equipment Operator II	9/26/15	
	Plumber	9/20/14	
	Pump Station Mechanic Apprentice	8/8/11	
	Pumping Station Mechanic	1/26/15	
	Sr. Electrician	2/16/15	
	Trades Helper	3/14/15	
	Trades Helper	11/10/15	
WWTPO	1/1/12	11	

Total Vacant Positions 26

II. CONTRACTUAL SERVICES

**New Castle County Department of Special Services
Division of Construction Support
FY2017 Contractual Services Details**

OCA	OCA Title	Object Level	Object Level 3 Title	FY2017 Budgeted Amount	Explanation		
040302	Construction Support	5100	Vehicular Repair	\$ 10,000	Repairs not handled in-house		
		5101	Equipment Repair	\$ 21,400	Miscellaneous shop equipment		
		5406	Other Professional Services	\$ 20,750	Testing clean fill; stormwater facility maintenance		
		5504	Equipment Rental	\$ 44,300	Rental of equipment to perform construction related work		
		5602	Landscape Services	\$ 10,700	Tree emergencies in waterways		
		5738	Non Hazardous Waste Disposal	\$ 14,000	Disposal of non hazardous waste		
			Misc. Professional Services	\$ 9,500	Miscellaneous Contractual Services		
			Subtotal Contractual Services	\$ 130,650			
			IGS Costs	5900	IS Contract-Data Processing	\$ 221,095	Computer cross charges, in-house
				5904	IS Contract-Fleet-Vehicle	\$ 982,464	Vehicle cross charge
			Subtotal IGS Costs	\$ 1,203,559			
Total Contractual Services				\$ 1,334,209			

**New Castle County Department of Special Services
Division of Environmental Compliance
FY2017 Contractual Services Details**

OCA	OCA Title	Object Level	Object Level 3 Title	FY2017 Budgeted Amount	Explanation	
040305	Environmental Compliance	5101	Equipment Repairs	\$ 245,000	Flow metering contract	
		5200	Service Contracts	\$ 11,582	Lab equipment service contracts	
		5406	Professional Services*	\$ 460,000	PCB Sampling; Chemical (FOG) and bacterial grease abatement; NPDES; FOG	
		5408	Attorney Fees	\$ 40,000	Wilmington contract negotiation fees	
		5600	Engineering Services	\$ 730,000	Consultants; State debris pit funds; NPDES; FOG; Inspection	
		5602	Landscape Services	\$ 25,000	Mowing ponds	
			Misc. Professional Services	\$ 10,600	Miscellaneous Contractual Services	
			Subtotal Contractual Services	\$ 1,522,182		
		IGS Costs	5900	IS Contract- Data Processing	\$ 63,002	Computer cross charges, in-house
			5904	IS Contract-Fleet-Vehicle	\$ 33,801	Vehicle cross charge
			Subtotal IGS Costs	\$ 96,803		
			*Includes CMOM Enhancement Program for Fats, Oils and Grease program approved in FY2009; without the Program total is \$310,000.			
Total Contractual Services				\$ 1,618,985		

**New Castle County Department of Special Services
Division of Environmental Operations
FY2017 Contractual Services Details**

OCA	OCA Title	Object Level	Object Level 3 Title	FY2017 Budgeted Amount	Explanation	
040310	<i>Environmental Operations</i>	5406	<i>Professional Services</i>	\$ 96,600	<i>Sewer & stormwater ops w/ Conserv. District & stormwater consulting</i>	
		5600	<i>Engineering Services</i>	\$ 31,530	<i>Consulting for septic elimination and District engineering services</i>	
		5416	<i>Stormwater Infrastructure</i>	\$ 16,135	<i>Repairs to stormwater facilities as needed</i>	
				\$ 750	<i>Miscellaneous Contractual Services</i>	
			<i>Subtotal Contractual Services</i>	\$ 145,015		
		<i>IGS Costs</i>	5900	<i>IS Contract- Data Processing</i>	\$ 38,604	<i>Computer cross charges, in-house</i>
			5904	<i>IS Contract-Fleet-Vehicles</i>	\$ 5,756	<i>Vehicle cross charge</i>
		<i>Subtotal IGS Costs</i>	\$ 44,360			
Total Contractual Services				\$ 189,375		

**New Castle County Department of Special Services
Division of Sewer Maintenance
FY2017 Contractual Services Details**

OCA	OCA Title	Object Level	Object Level 3 Title	FY2017 Budgeted Amount	Explanation
040311	Sewer Maintenance	5100	Vehicle Repairs	\$ 10,000	Repairs not handled in-house
		5101	Equipment Repair	\$ 28,952	Repairs to various sewer equipment
		5406	Professional Services*	\$ 1,727,350	Trunkline PM; Chemical Root; Sanitary Sewer CCTV; etc.
		5600	Engineering Services	\$ 59,524	Engineering and GIS mapping consultants as needed
		5613	Sewer Infrastructure	\$ 179,500	Repairs to various sewer lines as needed
				\$ 13,600	Miscellaneous Contractual Services
				\$ 2,018,926	
	IGS Costs	5900	IS Contract- Data Processing	\$ 186,001	Computer cross charges, in-house
		5904	IS Contract-Fleet-Vehicles	\$ 593,167	Vehicle cross charge
			Subtotal IGS Costs	\$ 779,168	
					*Includes CMOM Enhancement Programs for Trunk Line PM; Chemical Root; Sanitary Sewer CCTV approved in FY2009. Without the Programs total is \$0.
Total Contractual Services				\$ 2,798,094	

**New Castle County Department of Special Services
Division of Plant Operations
FY2017 Contractual Services Details**

OCA	OCA Title	Object Level	Object Level 3 Title	FY2017 Budgeted Amount	Explanation
040312	Plant Operations	5101	Equipment Repair	\$ 83,000	Repairs to generators, pumps, chlorinators as needed
		5102	Radio & Communications	\$ 72,000	Maintenance and operation of VHF Radio; AVL; Mobile; Data
		5104	Facility Repair	\$ 131,000	Various concrete, structure and building repairs as needed
		5406	Professional Services*	\$ 475,000	Odor and H2S treatment CRFM and other locations (CMOM)
		5504	Other Equipment	\$ 21,200	Lease tower space for radio communication
		5613	Sewer Infrastructure	\$ 23,000	Repair to various lines to and from plant locations as needed
		5731	Trash Removal	\$ 16,500	Trash and sludge removal from plant sites
				\$ 21,600	Miscellaneous Contractual Services
				\$ 843,300	Subtotal Contractual Services
	IGS Costs	5900	IS Contract- Data Processing	\$ 186,914	Computer cross charges, in-house
		5904	IS Contract-Fleet-Vehicles	\$ 411,355	Vehicle cross charge
			\$ 598,269	Subtotal IGS Costs	
*Includes CMOM Enhancement Program for Odor and H2S Treatment CRFM and other locations approved in FY2009. Without the Program the cost is \$0.					
Total Contractual Services				\$ 1,441,569	

III. BUDGET BY OBJECT CODE

**NEW CASTLE COUNTY DEPARTMENT OF SPECIAL SERVICES
FY2017 RECOMMENDED SEWER FUND**

Object Level 1	Object Level 3	Construction Support	Environmental Compliance	Environmental Operations	Plant Operations	Sewer Maint	Grand Total
11 Salaries and Wages	1001 Salaries & Wages-Permanent	3,153,595	1,049,962	724,674	2,696,213	2,609,939	10,234,383
	1003 Salaries & Wages-Seasonal	39,332	7,500	-	-	-	46,832
	1007 Salaries & Wages-Shift Diff.	-	-	-	6,800	19,000	25,800
	1008 Salaries & Wages-Overtime	281,216	5,500	26,000	325,000	442,000	1,079,716
	1009 Salaries & Wages- Premium & Overtime	-	9,500	-	90,000	40,000	139,500
11 Salaries and Wages Total		3,474,143	1,072,462	750,674	3,118,013	3,110,939	11,526,231
15 Employee Benefits	1500 Emp. Bene.-Regular Overhead	1,718,709	572,229	394,948	1,469,435	1,422,417	5,577,738
	1510 Empl. Ben. - Premium Overhead	153,263	8,175	14,170	229,881	273,045	678,534
	1520 E/B-Regular-Part-Time	3,933	750	-	-	-	4,683
15 Employee Benefits Total		1,875,905	581,154	409,118	1,699,316	1,695,462	6,260,955
22 Training and Civic Affairs	2004 Mileage Reimbursements	-	-	-	-	40	40
	2005 Tolls	-	150	100	-	45	295
	2006 Parking Fees	-	-	100	-	15	115
	2104 Training Materials	-	-	-	-	130	130
	2301 Membership Dues	-	1,500	150	250	100	2,000
22 Training and Civic Affairs Total		-	1,650	350	250	330	2,580
23 Communication and Utilities	3100 Postage	-	-	-	150	50	200
	3115 Freight/Shipping	-	-	-	600	-	600
	3200 Telephone Service	-	-	-	32,500	-	32,500
	3204 Telephone - Local Data Services	-	-	-	39,000	-	39,000
	3212 Cellular/Wireless Data Service	5,000	5,000	2,000	17,000	6,000	35,000
	3300 Electric Service	-	-	-	1,530,000	-	1,530,000
	3400 Water Service	-	-	-	76,000	-	76,000
	3500 Landfill Charges	10,000	-	-	12,000	5,000	27,000
	3600 Gas Heat	-	-	-	18,000	-	18,000
	3800 Sewer Service	-	18,394,444	-	-	-	18,394,444
	3801 Sewer Service - Middletown	-	15,000	-	-	-	15,000
23 Communication and Utilities Total		15,000	18,414,444	2,000	1,725,250	11,050	20,167,744
24 Materials and Supplies	4000 Books and Subscriptions	-	600	100	300	400	1,400
	4001 Clothing and Uniforms	3,000	600	26,000	22,995	5,000	57,595
	4004 Miscellaneous Materials	1,000	-	-	6,000	-	7,000
	4101 Office Supplies	300	500	2,000	1,100	1,200	5,100
	4102 Photographic Supplies	-	-	-	-	1,100	1,100
	4103 Duplicating & Repro. Supplies	-	100	-	-	-	100

NEW CASTLE COUNTY DEPARTMENT OF SPECIAL SERVICES
FY2017 RECOMMENDED SEWER FUND

Object Level 1	Object Level 3	Construction Support	Environmental Compliance	Environmental Operations	Plant Operations	Sewer Maint	Grand Total
24 Materials and Supplies	4104 Computer Supplies	-	2,000	1,500	2,400	1,800	7,700
	4105 Medical & Safety Supplies	7,500	3,000	1,900	21,000	20,000	53,400
	4106 Custodial Supplies	2,000	-	-	5,850	9,000	16,850
	4220 Construction Material	339,307	-	-	43,000	15,000	397,307
	4221 Electrical Supplies	-	-	-	54,600	1,200	55,800
	4222 Plumbing Supplies	38,000	-	-	34,700	2,000	74,700
	4223 Lumber	1,000	-	-	1,650	-	2,650
	4224 Equipment Repair Supplies	900	2,000	-	173,000	66,289	242,189
	4310 Chemical Supplies	65,236	35,000	-	71,400	10,000	181,636
	4311 Gas & Welding Supplies	-	3,000	-	9,000	-	12,000
	4312 Propane	-	-	-	175	-	175
	4320 Agricultural Supplies	10,000	-	-	38,400	3,000	51,400
	4336 Motor Fuels-Diesel	-	-	-	16,000	-	16,000
	4350 Small Tools	7,500	-	-	12,500	19,684	39,684
24 Materials and Supplies Total		475,743	46,800	31,500	514,070	155,673	1,223,786
25 Contractual Services	5100 Vehicular Repairs	10,000	-	-	500	10,000	20,500
	5101 Equipment Repairs	21,400	245,000	-	83,000	28,952	378,352
	5102 Radio & Communication Repairs	-	-	-	72,000	1,000	73,000
	5104 Facility Repairs	-	-	-	131,000	-	131,000
	5200 Service Contracts-Other	-	11,582	-	-	-	11,582
	5300 Printing & Related Costs	-	-	750	-	-	750
	5406 Other Professional Services	20,750	460,000	96,600	475,000	1,727,350	2,779,700
	5408 Attorney Fees	-	40,000	-	-	-	40,000
	5504 Other Equipment & Prop. Rental	44,300	-	-	21,200	9,400	74,900
	5600 Engineering Services	-	730,000	31,530	7,800	59,524	828,854
	5602 Landscape Services	10,700	25,000	-	-	-	35,700
	5610 Site Preparations	-	-	-	2,000	-	2,000
	5613 Sewer Infrastructure	-	-	-	23,000	179,500	202,500
	5614 Stormwater Infrastructure	3,000	-	16,135	-	-	19,135
	5730 Pest Control	-	-	-	-	2,000	2,000
	5731 Trash Removal	-	-	-	16,500	-	16,500
	5735 Safety Inspections	-	-	-	8,100	-	8,100
	5736 Fire and Security Services	-	-	-	3,200	-	3,200
	5738 Non Hazardous Waste Disposal	14,000	-	-	-	-	14,000
	5739 Chemical Analysis	-	8,500	-	-	-	8,500
	5740 Car Wash Service	6,500	-	-	-	600	7,100
	5810 Food Services	-	2,100	-	-	600	2,700
25 Contractual Services Total		130,650	1,522,182	145,015	843,300	2,018,926	4,660,073

**NEW CASTLE COUNTY DEPARTMENT OF SPECIAL SERVICES
FY2017 RECOMMENDED SEWER FUND**

Object Level 1	Object Level 3	Construction Support	Environmental Compliance	Environmental Operations	Plant Operations	Sewer Maint	Grand Total
30 Intergovernmental Service Chge	5900 IS Contract-Data Processing	221,095	63,002	38,604	186,914	186,001	695,616
	5904 IS Contract-Fleet-Vehicles	982,464	33,801	5,756	411,355	593,167	2,026,543
30 Intergovernmental Service Chge Total		1,203,559	96,803	44,360	598,269	779,168	2,722,159
26 Equipment Replacement	6110 Communication Equipment <\$5,000	-	-	-	10,000	1,000	11,000
	6111 Safety Equipment <\$5,000	-	-	-	36,000	10,000	46,000
	6112 Laboratory & Scientific Equip. <\$5,000	-	9,000	-	5,200	-	14,200
	6113 Laboratory & Scientific Equip. =>\$5,000	-	-	-	-	-	-
	6114 Communication Equipment =>\$5,000	-	-	-	-	-	-
	6117 Safety Equipment =>\$5,000	10,000	-	-	-	-	10,000
	6122 Photography & Video Equip <\$5,000	-	-	700	-	-	700
	6150 Instruments <\$5,000	-	9,000	-	4,000	2,000	15,000
	6171 Non-Motorized Mobile Equip. =>\$5,000	-	-	-	-	57,000	57,000
	6180 Building Equipment <\$5,000	-	-	-	8,500	-	8,500
	6181 Building Equipment =>\$5,000	-	-	-	14,000	-	14,000
	6201 Office Furniture <\$5,000	-	-	2,200	500	-	2,700
	6401 Construction Machinery	-	-	-	5,500	-	5,500
	6402 Portable Machinery <\$5,000	11,400	-	-	16,500	-	27,900
	6403 Fixed Machinery <\$5,000	-	-	-	21,000	-	21,000
	6405 Portable Machinery =>\$5,000	-	-	-	7,800	17,246	25,046
	6406 Fixed Machinery =>\$5,000	-	-	-	25,000	-	25,000
	6410 Special Purpose Machinery <\$5,000	-	-	-	7,900	-	7,900
	6411 Special Purpose Machinery =>\$5,000	-	-	-	10,000	-	10,000
26 Equipment Replacement Total		21,400	18,000	2,900	171,900	87,246	301,446
27 Fixed Charges	7010 County Mandated Grants	-	-	120,000	-	-	120,000
	7014 Settlements	-	100,000	-	-	-	100,000
	7150 Tax Payments	-	-	300	-	-	300
	7210 Pass Thru Grants	-	-	-	-	73,600	73,600
27 Fixed Charges Total		-	100,000	120,300	-	73,600	293,900
28 Land & Structures	8011 Land Improvements Sewer	20,000	-	-	-	-	20,000
28 Land & Structures Total		20,000	-	-	-	-	20,000
Grand Total		7,216,400	21,853,495	1,506,217	8,670,368	7,932,394	47,178,874

IV. FEE SCHEDULE

FY2017 Fee Schedule

Department of Special Services

Item #	Object Code	Revenue Source	FY2017 Projected Revenue	Comments
1	0256	Construction Plan Review Exploratory Plan Review	\$ 20,000	Sewer Plans \$750-\$1,500
2	0257	Wastehauler Dump Fees Wastehauler Permit Fees	\$ 700,000 \$ 6,300	Most haulers are out of state; they have other options for dumping Annual Waste Hauler Fee
3	0258	Survey & Inspections Pump Station Inspection	\$ 80,000	Fee in UDC Propose flat fee of \$5,500 based on current costs.
4	0259	Ground Water Discharge	\$ 23,000	Handled thru special approval; limited to term and requirements
5	0263	Wastewater Permit Fees: -EPA Categorical Standard -Process Flow >25,000 gpd -Toxic Chemical POTW Transfer -Nonsignificant Industrial User -Permit Variance -SIU Permit Amendment -Nonsignificant User Amendment	\$ 227,000	Code change made. Fee increases by CPI each year.
6	0267	CFE Fee	\$ 110,000	Fats, Oil and Grease Program mandated by EPA.
7	0972	Miscellaneous	\$ 9,000	Scrap Metal, rebates, etc...
			\$ 1,175,300	