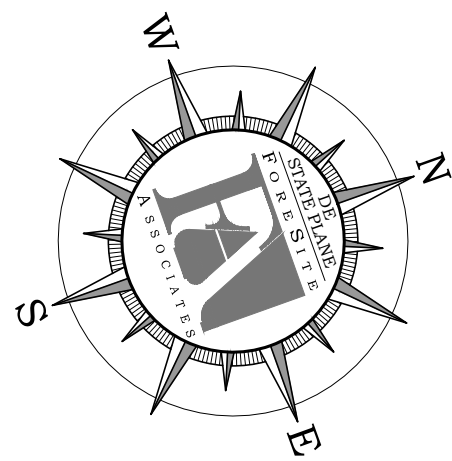
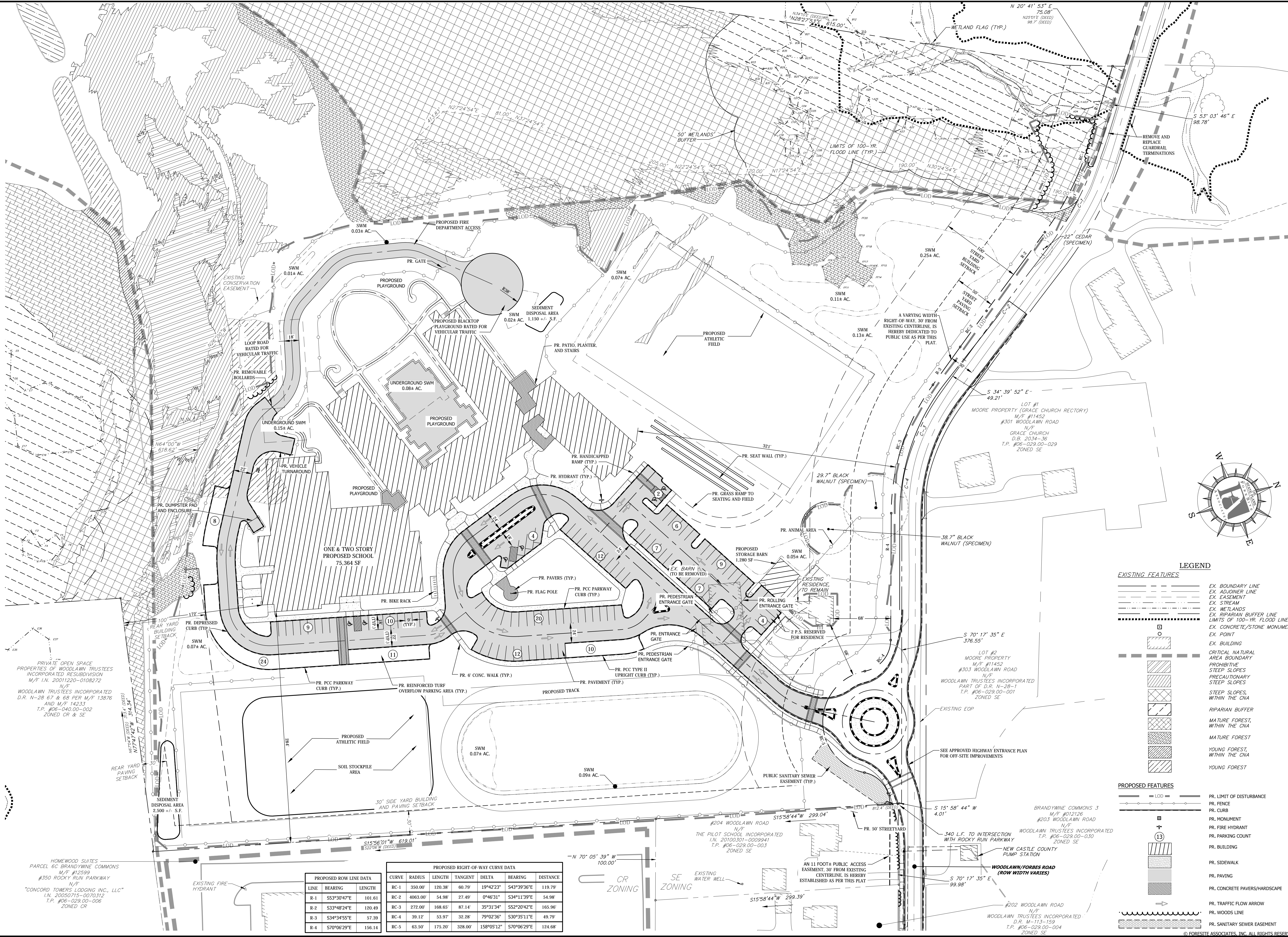


THE PILOT SCHOOL
 100 GARDEN OF EDEN ROAD, WILMINGTON, DE 19803



LEGEND

- EXISTING FEATURES**
- EX. BOUNDARY LINE
 - EX. ADJOINER LINE
 - EX. EASEMENT
 - EX. STREAM
 - EX. WETLANDS
 - EX. RIPARIAN BUFFER LINE
 - EX. LIMITS OF 100-YR. FLOOD LINE
 - EX. CONCRETE/STONE MONUMENT
 - EX. POINT
 - EX. BUILDING
 - CRITICAL NATURAL AREA BOUNDARY
 - PROHIBITIVE SLOPES
 - PRECAUTIONARY SLOPES
 - STEEP SLOPES, WITHIN THE CNA
 - RIPIARIAN BUFFER
 - MATURE FOREST, WITHIN THE CNA
 - MATURE FOREST
 - YOUNG FOREST, WITHIN THE CNA
 - YOUNG FOREST
- PROPOSED FEATURES**
- PR. LIMIT OF DISTURBANCE
 - PR. FENCE
 - PR. CURB
 - PR. MONUMENT
 - PR. FIRE HYDRANT
 - PR. PARKING COUNT
 - PR. BUILDING
 - PR. SIDEWALK
 - PR. PAVING
 - PR. CONCRETE PAVERS/HARDSCAPE
 - PR. TRAFFIC FLOW ARROW
 - PR. WOODS LINE
 - PR. SANITARY SEWER EASEMENT

PROPOSED ROW LINE DATA

LINE	BEARING	LENGTH
R-1	S53°30'47"E	101.61
R-2	S33°48'24"E	120.49
R-3	S34°34'55"E	57.30
R-4	S70°06'29"E	156.14

PROPOSED RIGHT-OF-WAY CURVE DATA

CURVE	RADIUS	LENGTH	TANGENT	DELTA	BEARING	DISTANCE
RC-1	350.00'	120.38'	60.79'	19°42'23"	S43°39'36"E	119.79'
RC-2	4063.00'	54.98'	27.49'	0°46'31"	S34°11'39"E	54.98'
RC-3	272.00'	168.65'	87.14'	35°31'34"	S52°20'42"E	165.96'
RC-4	39.12'	53.97'	32.28'	79°02'36"	S30°35'11"E	49.79'
RC-5	63.50'	173.20'	328.00'	158°05'12"	S70°06'29"E	124.68'

#	COMMENT	BY	DATE
7	PER NCC COMMENTS	ALH	04.20.11
6	PER NCC COMMENTS	ALH	04.11.11
5	PER NCC COMMENTS	ALH	07.28.10
4	NO REVISIONS THIS SHEET	ALH	06.29.10
3	NO REVISIONS THIS SHEET	ALH	04.22.10
2	PER DELDOT REVIEW	MDS	03.22.10
1	ISSUED FOR REVIEW	MMM	12.08.09



RECORD MAJOR LAND DEVELOPMENT PLAN
PLAN VIEW

THE PILOT SCHOOL

DATE:	PROJECT #:
11.09.09	001.11
SURVEYED BY: ACH/ALH	SHEET: 2
CREATED BY: ACH/ALH	2 OF 2
DRAWN BY: ALH	
CHECKED BY: MMM	

SCALE: 1"=50'

0 20 40 60 80 100